

Collective properties of the nuclear matter from the STAR experiment at RHIC

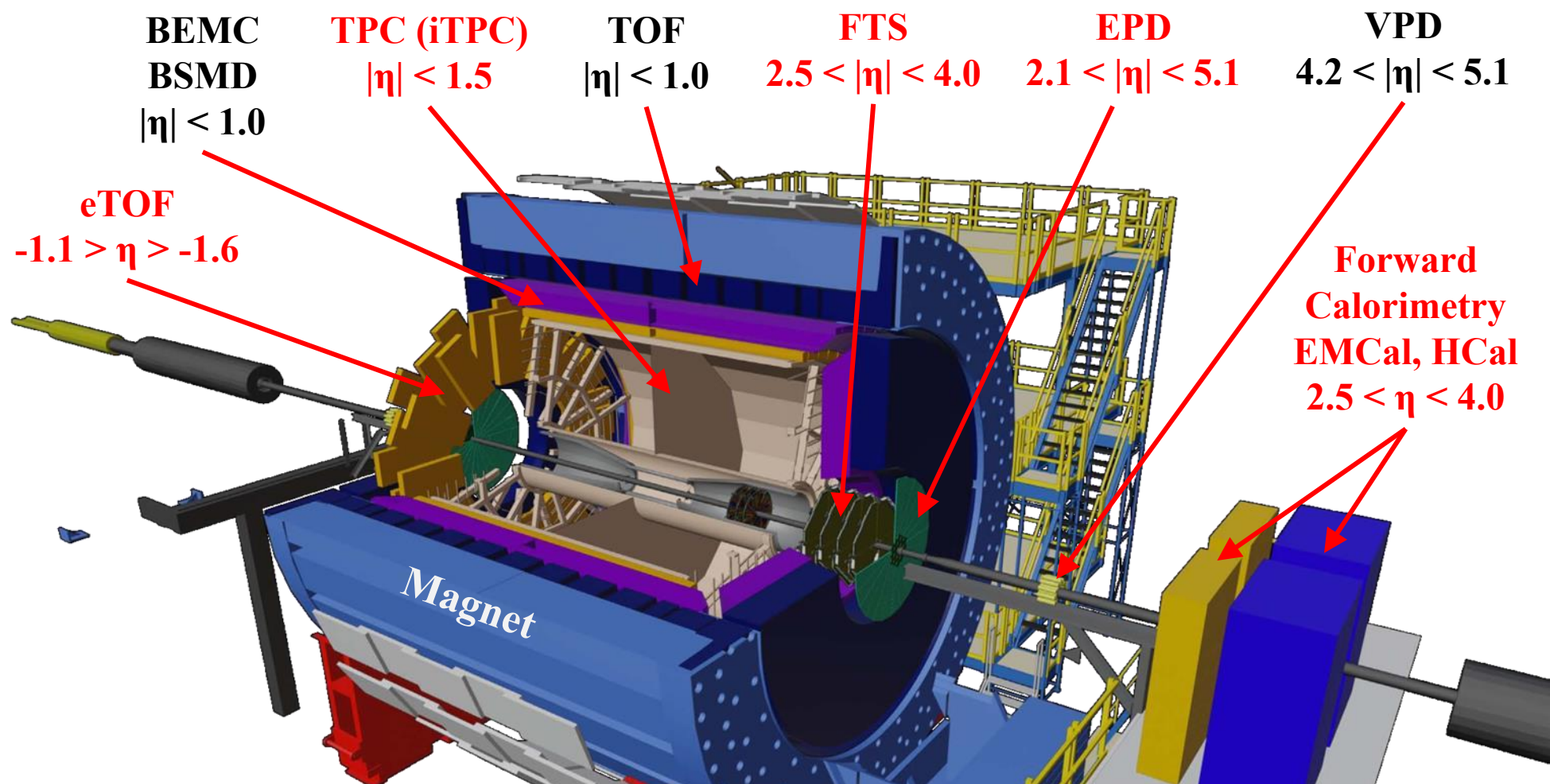
Vipul Bairathi (*for the STAR Collaboration*)

Instituto de Alta Investigación, Universidad de Tarapacá, Arica, Chile

New Trends in High-Energy
and Low- x Physics

Sfantu Gheorghe, Romania
September, 2–5, 2024

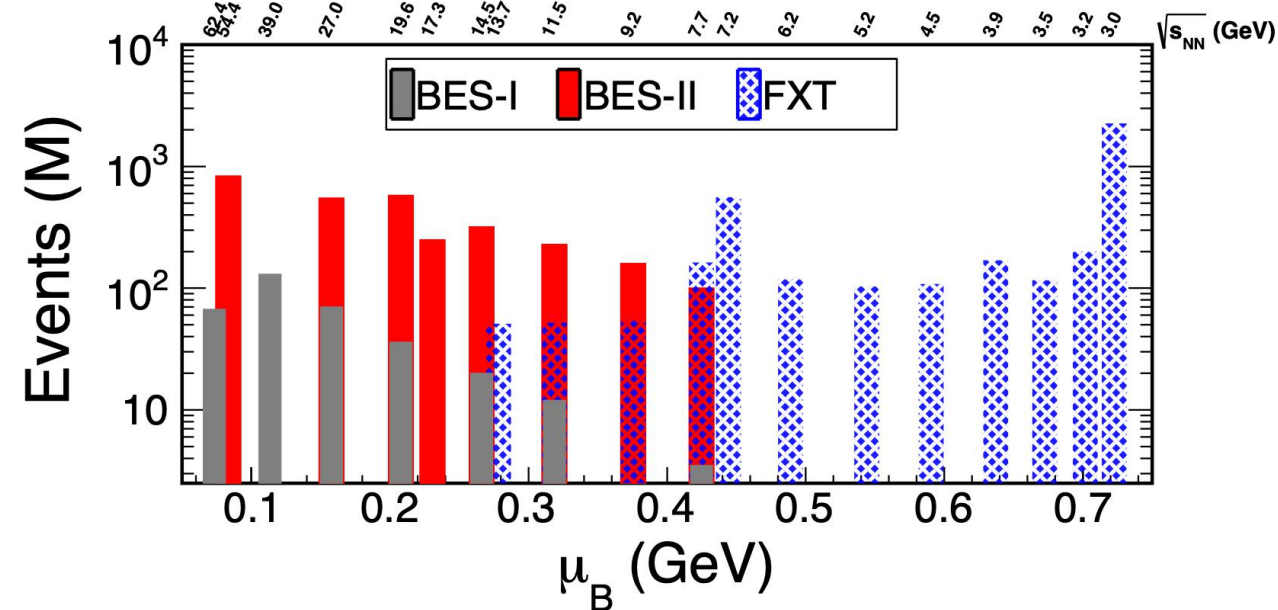
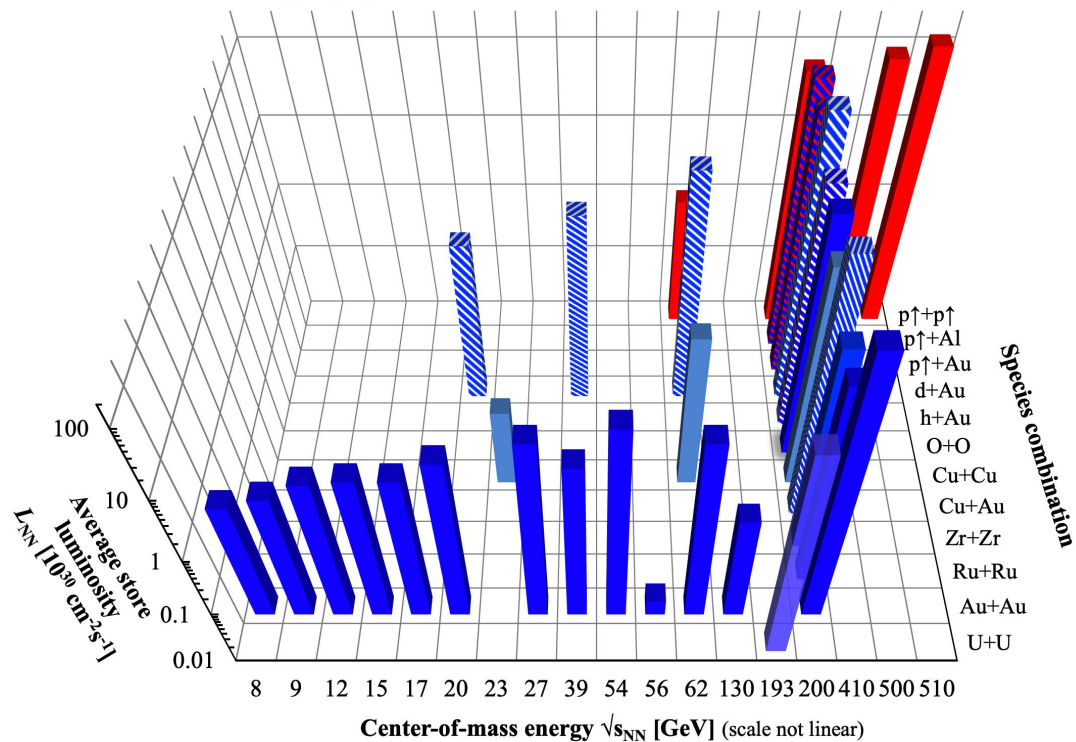
- Introduction: STAR Experiment at RHIC
- Motivation
- Collective flow
 - ▶ Directed Flow (v_1)
 - ▶ Elliptic Flow (v_2)
 - ▶ Triangular Flow (v_3)
- Nuclear size and deformation
- Summary



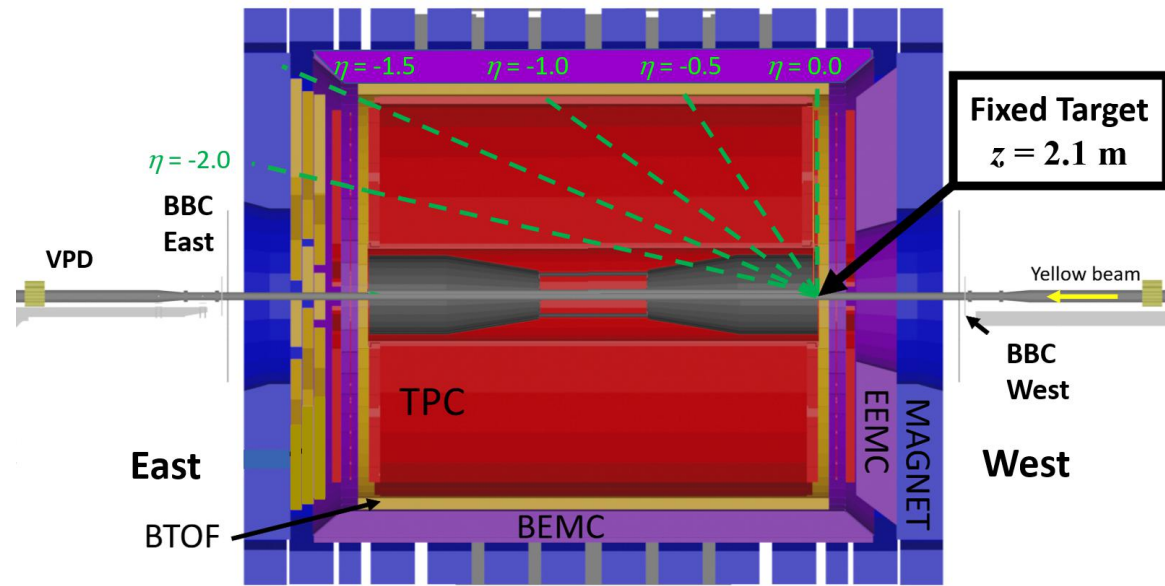
- **iTTPC:** Improved tracking, extended acceptance to $|\eta| < 1.5$, better dE/dx and momentum resolution
- **eTOF:** Extended PID in the forward region
- **EPD:** Independent centrality detector, Improved EP resolution, Trigger
- **Recent forward upgrades:** FCS, FTS, EMcal & HCal

- Wide range of collision beam energies to explore QCD phase diagram
 - Beam Energy Scan Phase II (BES-II): $\sqrt{s_{NN}} = 7.7 - 54.4$ GeV
 - Fixed Target (FXT): $\sqrt{s_{NN}} = 3.0 - 7.7$ GeV
- Different collision species to study the QCD medium at top RHIC energy $\sqrt{s_{NN}} = 200$ GeV
 - U+U, Au+Au, Ru+Ru, Zr+Zr, Cu+Cu, O+O, Cu+Au, He^3 +Au, d +Au, p +Au etc
- Increase in statistics over the years for precision measurement

RHIC energies, species combinations and luminosities (Run-1 to 22)

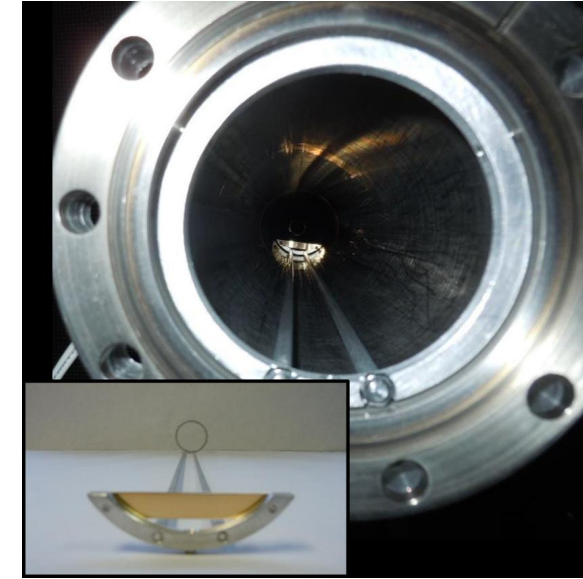


<https://www.agrhichome.bnl.gov/RHIC/Runs/>

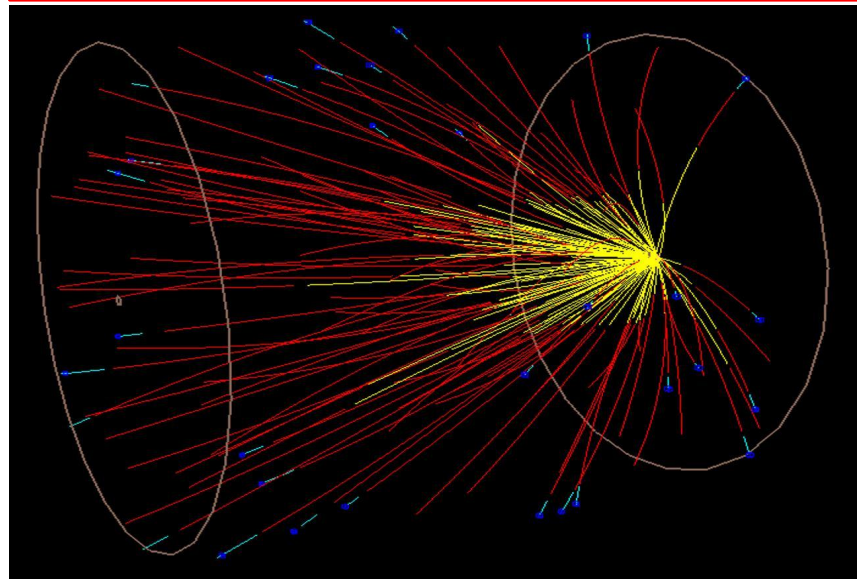


Gold target:

- 2 cm below nominal beam axis
- 2.1 m from center of STAR
- 0.25 mm foil

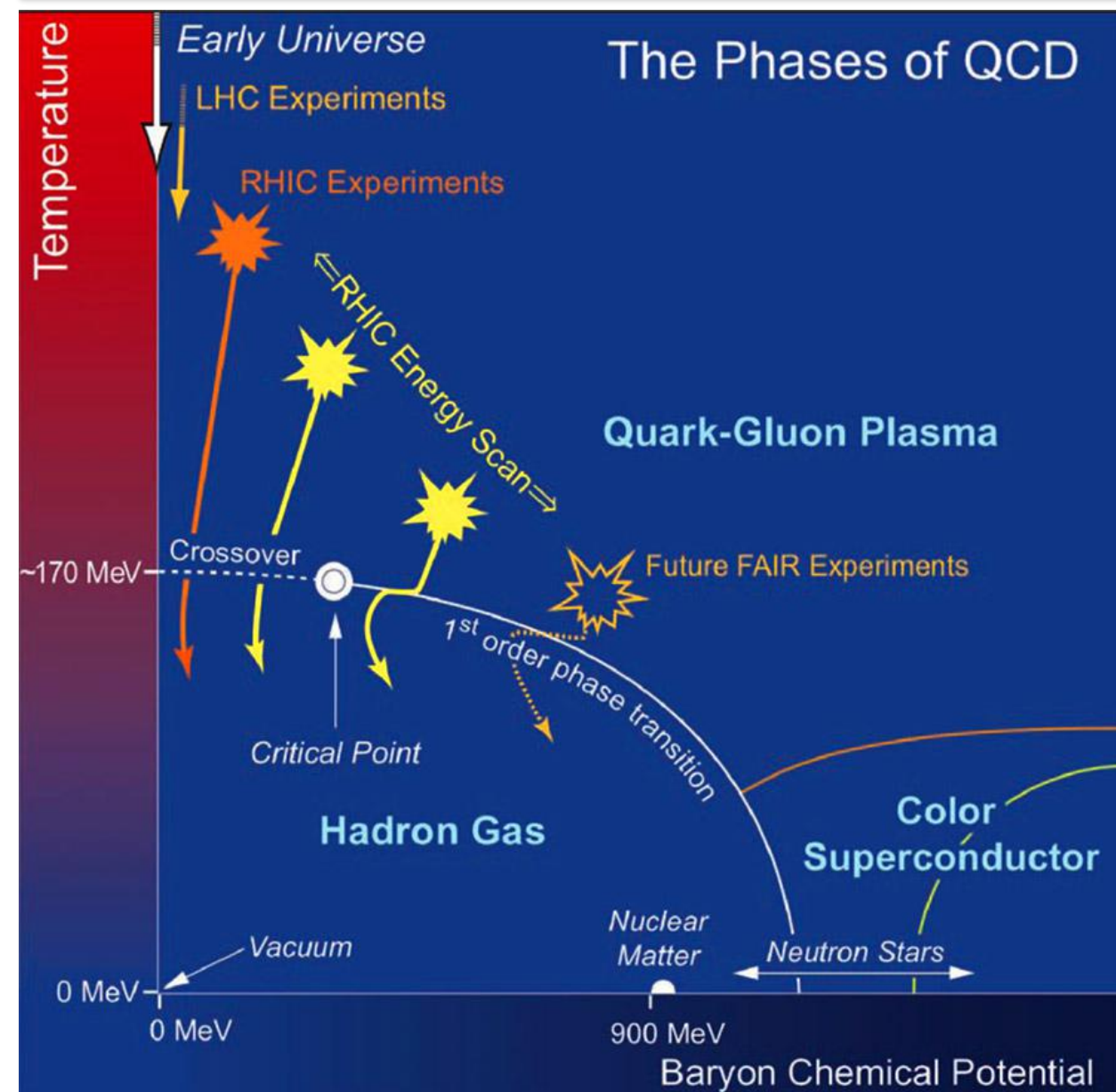


Au+Au at $\sqrt{s_{NN}} = 4.5$ GeV event



Beam Energy (GeV/nucleon)	$\sqrt{s_{NN}}$ (GeV)	μ_B (MeV)	Run Time	Number Events Requested (Recorded)	Date Collected
31.2	7.7 (FXT)	420	0.5+1.1 days	100 M (50 M+112 M)	Run-19+20
19.5	6.2 (FXT)	487	1.4 days	100 M (118 M)	Run-20
13.5	5.2 (FXT)	541	1.0 day	100 M (103 M)	Run-20
9.8	4.5 (FXT)	589	0.9 days	100 M (108 M)	Run-20
7.3	3.9 (FXT)	633	1.1 days	100 M (117 M)	Run-20
5.75	3.5 (FXT)	666	0.9 days	100 M (116 M)	Run-20
4.59	3.2 (FXT)	699	2.0 days	100 M (200 M)	Run-19
3.85	3.0 (FXT)	721	4.6 days	100 M (259 M)	Run-18
3.85	3.0 (FXT)	721	13.7 days	(1.7 B)	Run-21

M. S. Abdallah et al. (STAR Collaboration), Phys. Rev. C 103, 034908 (2021)

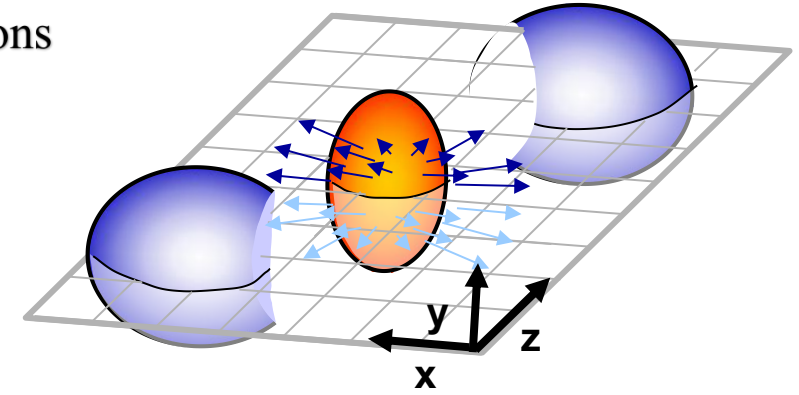


Conjectured QCD Phase diagram

- Explore QCD phase diagram by varying baryon chemical potential and temperature via beam energy scan (BES)
- BES program at RHIC provide an experimental way to study nuclear matter at finite μ_B
- Properties of the QCD matter can be probed through bulk observables such as collective flow
- Provide a chance to study phase transition and to constrain initial conditions and geometry by studying fluctuations

- Collective flow describe the response of the medium produced in heavy-ion collisions
- Collective flow can be quantified using the Fourier expansion:

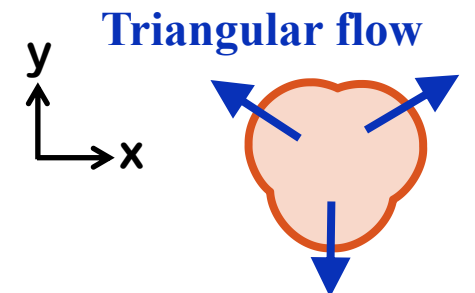
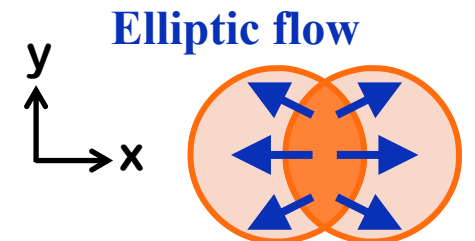
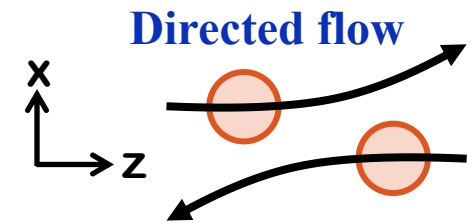
$$E \frac{d^3N}{dp^3} = \frac{1}{2\pi} \frac{d^2N}{p_T dp_T dy} \left(1 + \sum 2v_n \cos n(\phi - \Psi_n^{EP}) \right)$$



- Different flow coefficients:

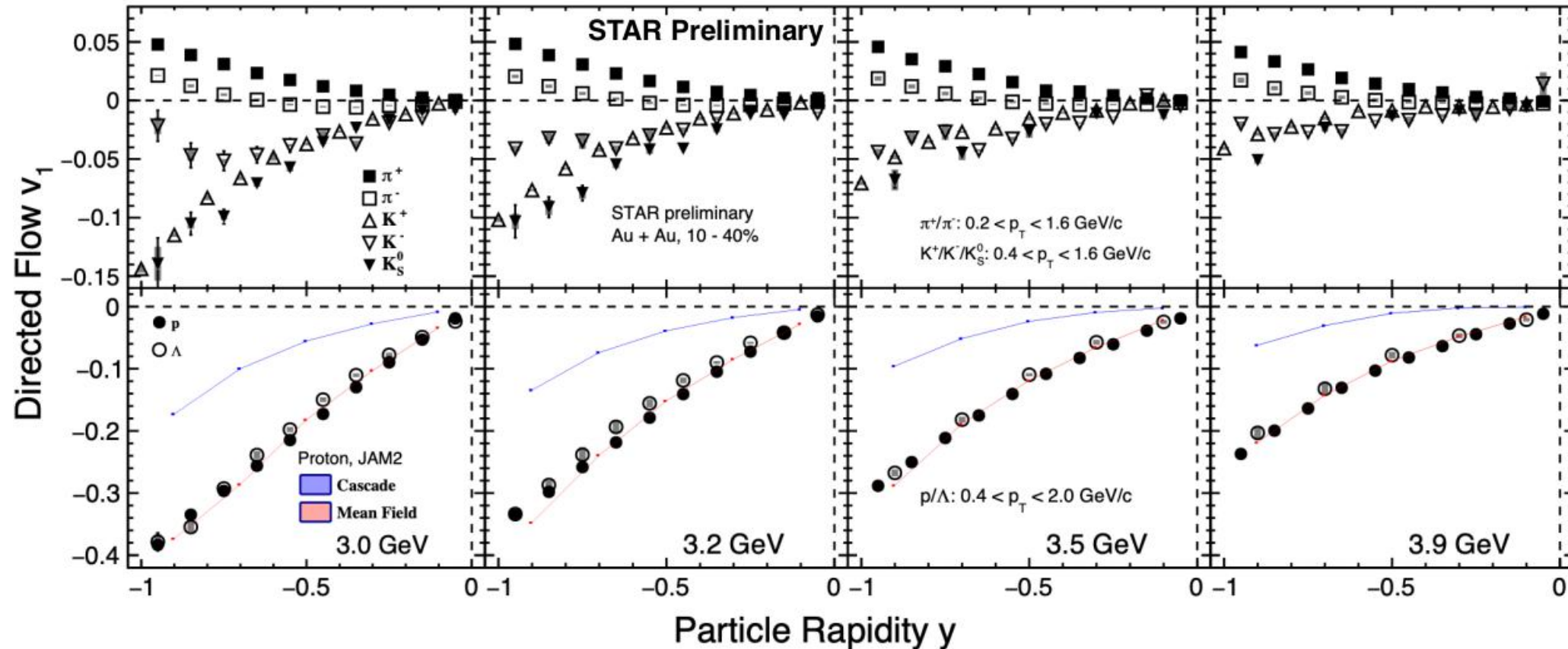
- **Directed Flow (v_1):** Sideward deflection of produced particles in the reaction plane
- **Elliptic Flow (v_2):** Result of pressure gradients caused by the initial overlap geometry
- **Triangular Flow (v_3):** Produced by event-by-event fluctuations in the initial shape

- **Sensitive to initial conditions, equation of state, transport properties (η/s) of system, and initial state fluctuations**
- **Probe for the particle production mechanism (e.g. quark coalescence)**



[1] A. M. Poskanzer & S.A. Voloshin, Phys. Rev. C 58, 1671 (1998).

[2] S. A. Voloshin, A. M. Poskanzer & R. Snellings, Landolt-Bornstein 23, 293-333 (2010).

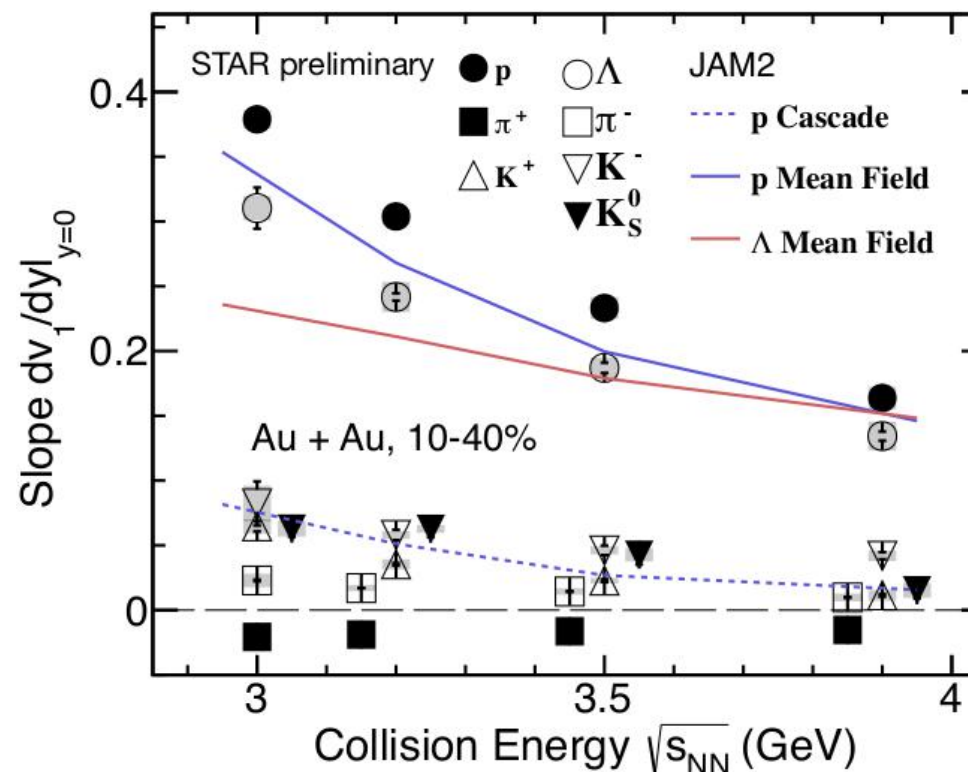
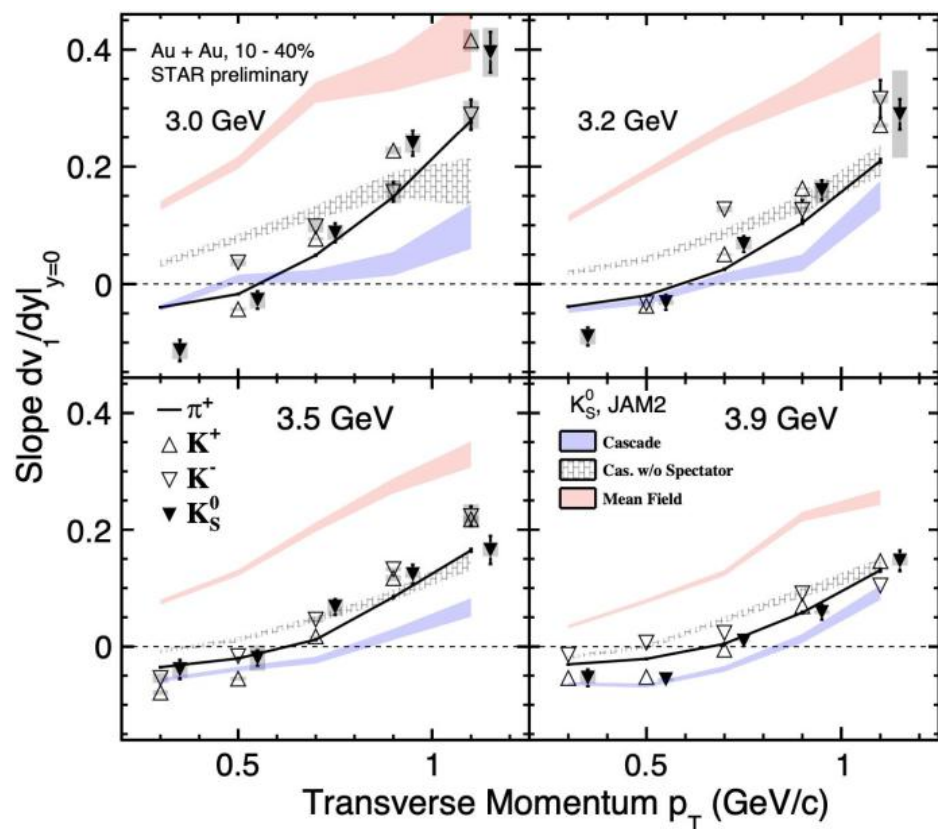


- Directed flow $v_1(y)$ of π , K, p, and Λ measured across various beam energies with high μ_B
- JAM model with momentum dependent baryonic mean-field describes baryon flow compared to cascade model

JET AA Microscopic Transport Model

- MS2: momentum dependent mean-field potential
- Incompressibility constant $\kappa = 210 \text{ MeV}$

M. S. Abdallah et al. (STAR Collaboration) Phys. Lett. B 827, 137003 (2022)

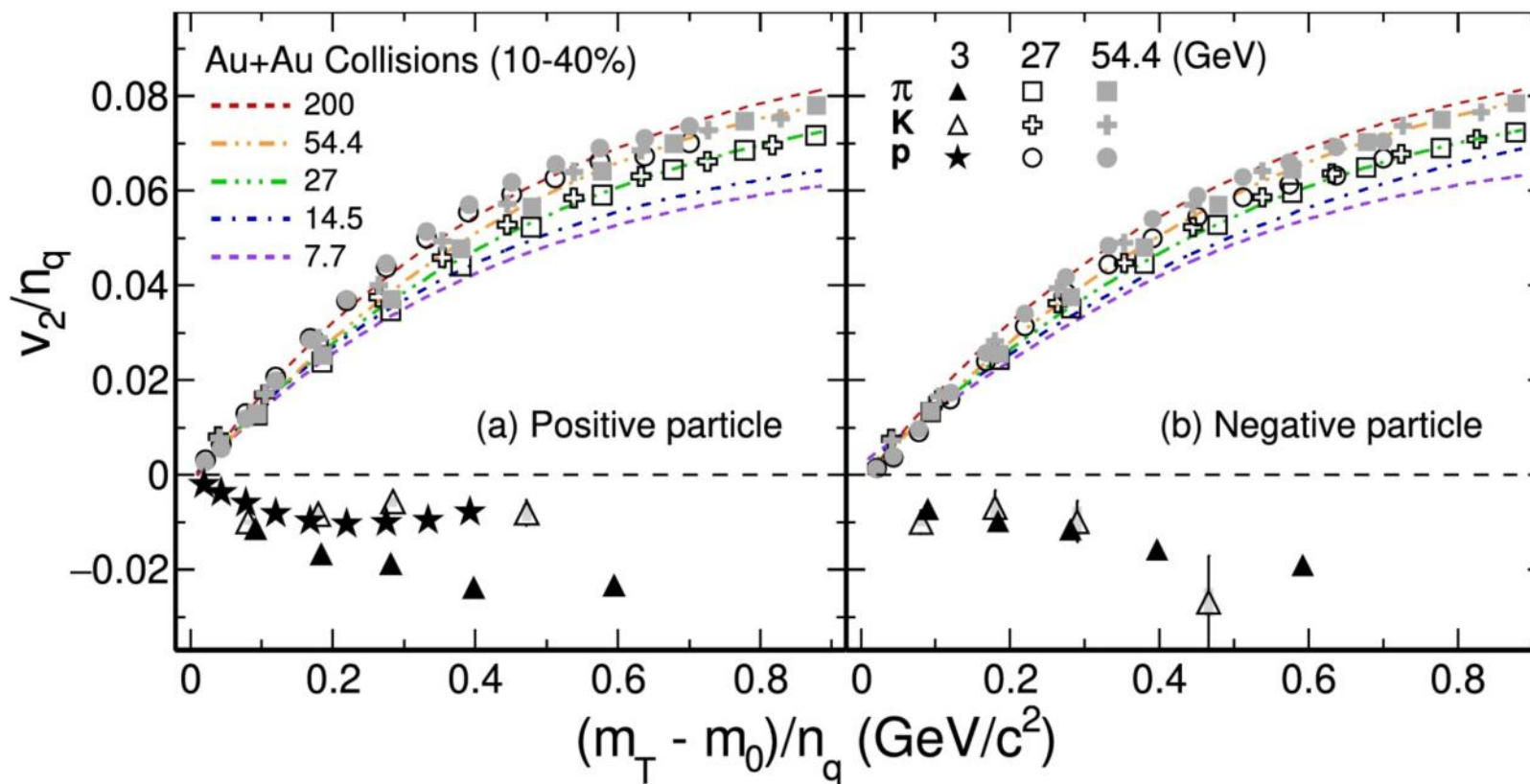


- Anti-flow of π^+ , K^\pm , K_S at low p_T is observed in beam energy range of 3-3.9 GeV.
- Shadowing effect of spectators could be responsible for anti-flow of these particles at high μ_B .

- Baryons v_1 slope decreases with increase in collision energy.
- JAM with baryonic mean field suggest a strong mean field at high baryon density region.

[1] M. S. Abdallah et al. (STAR Collaboration) Phys. Lett. B 827, 137003 (2022)

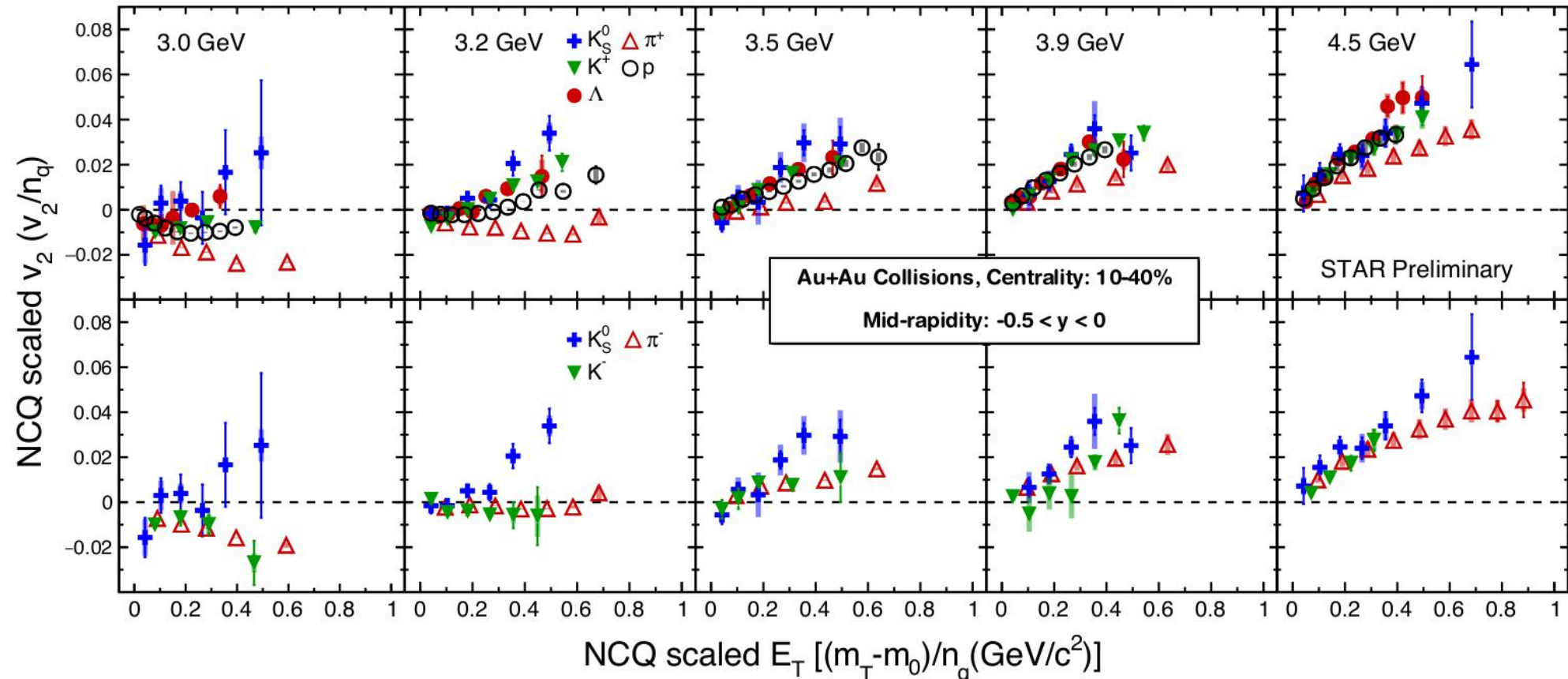
[2] Yasushi Nara, Akira Ohnishi. Phys. Rev. C 105, 014911 (2022)



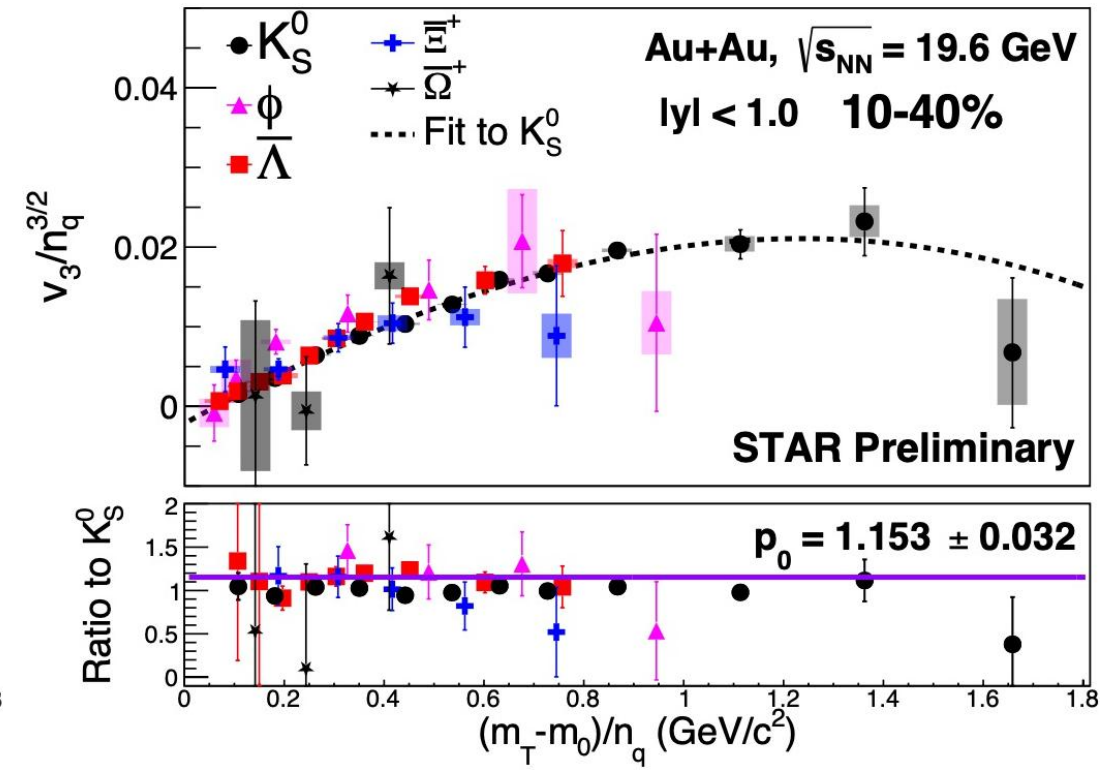
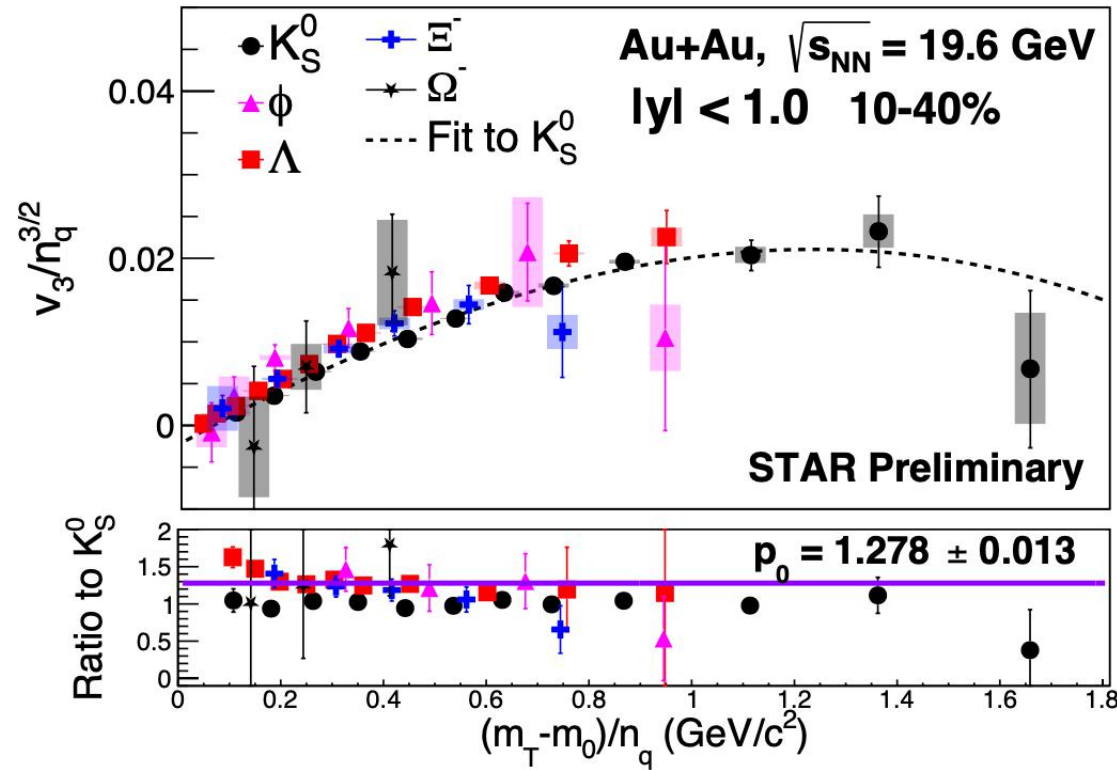
- NCQ scaling holds in Au+Au collisions from top RHIC energy $\sqrt{s_{NN}} = 200$ to 7.7 GeV
→ Partonic collectivity
- Negative v_2 values and breaking of NCQ scaling at $\sqrt{s_{NN}} = 3$ GeV
→ Indicative of medium dominated by hadronic interactions

[1] L. Adamczyk et al. (STAR Collaboration) Phys. Rev. C 88, 014902 (2013)

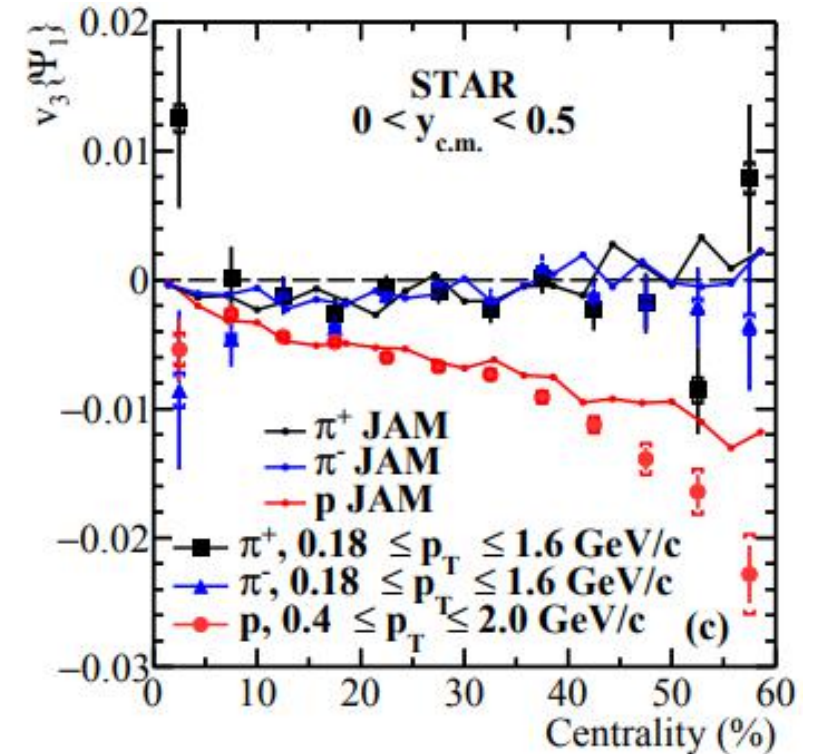
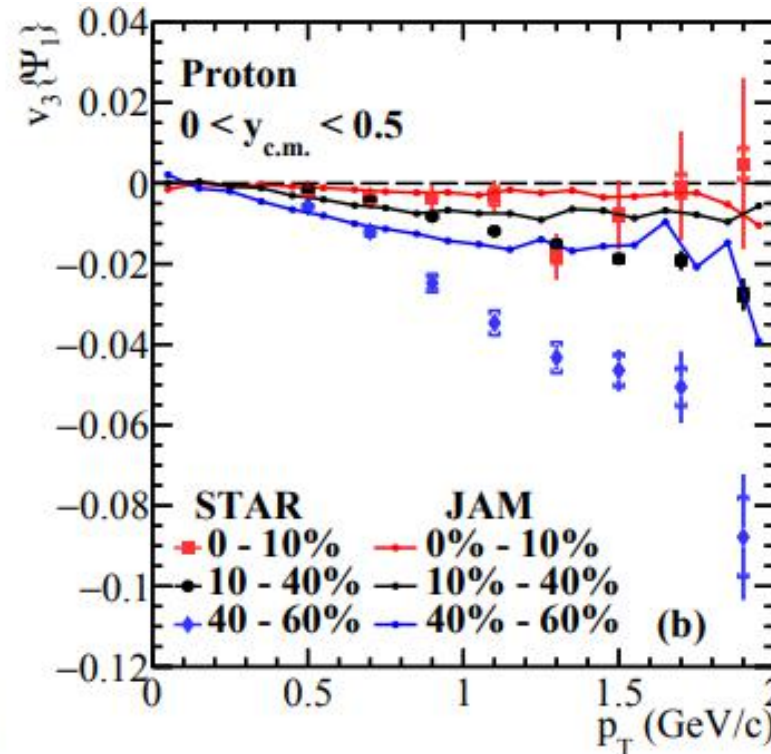
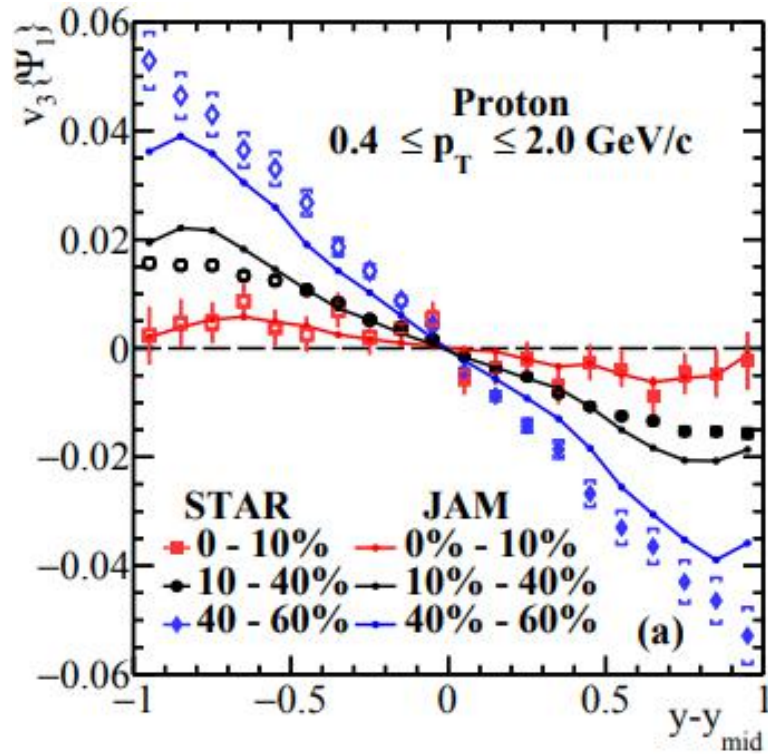
[2] M. S. Abdallah et al. (STAR Collaboration), Phys. Rev. C 103, 034908 (2021); Phys. Lett. B. 827 137003 (2022)



- NCQ scaling is broken in Au+Au collisions below 3.2 GeV
- NCQ scaling gradually improves in Au+Au collisions from 3.2 to 4.5 GeV
 → Indication of transition from hadronic dominated medium to partonic medium

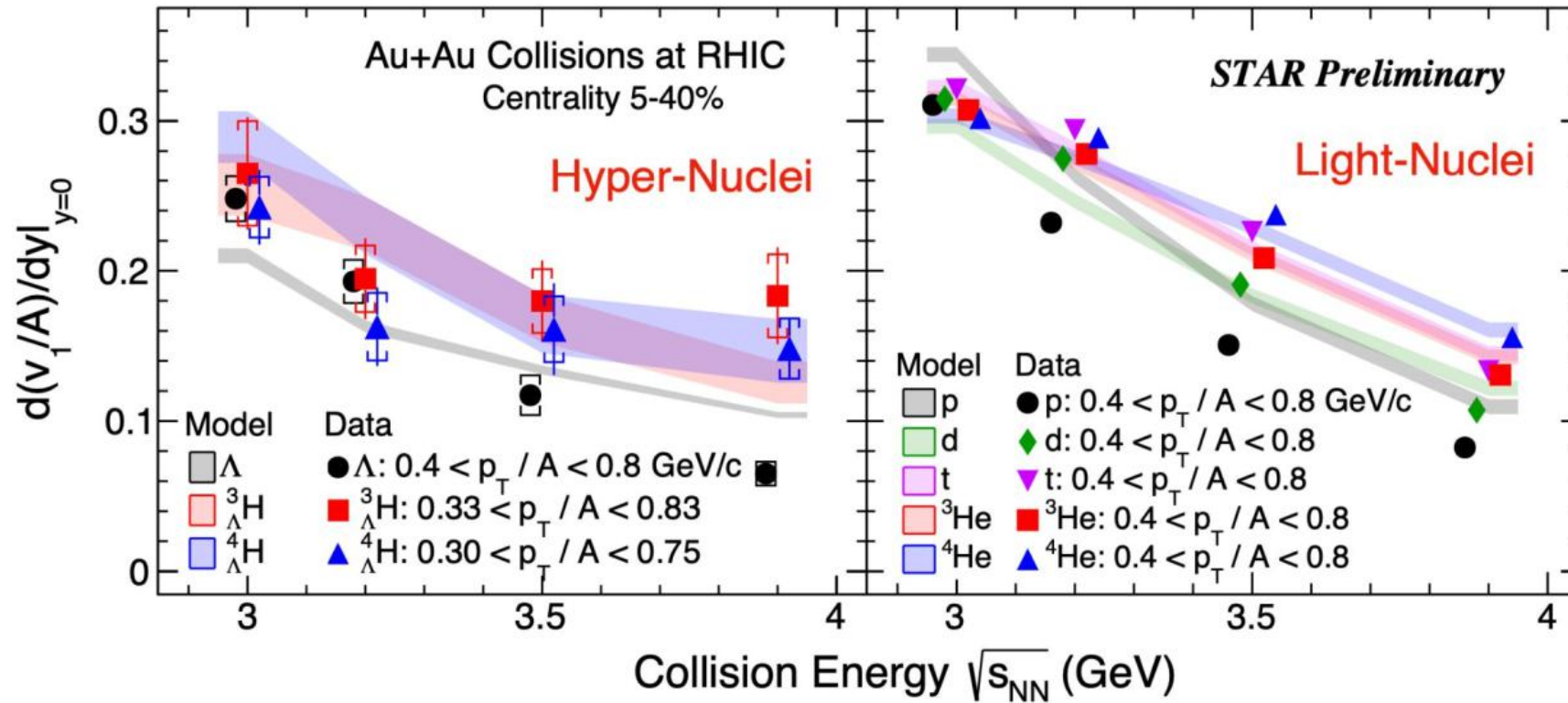


- Strange and multi-strange v_3 studied systematically in Au+Au collisions at BES-II energy $\sqrt{s_{NN}} = 19.6$ GeV.
- NCQ scaling of v_3 holds better for anti-particles ($\sim 15\%$) than the particles ($\sim 30\%$).



- Proton $v_3\{\psi_1\}$ measured as function of rapidity and p_T in Au+Au collisions $\sqrt{s_{NN}} = 3.0$ GeV.
- Magnitude of v_3 increases from central to peripheral collisions showing strong geometric effect.
- JAM model with mean-field describes the data well suggesting nuclear potential is essential for the development of $v_3\{\psi_1\}$ in Au+Au collisions $\sqrt{s_{NN}} = 3.0$ GeV.

[1] M. I. Abdulhamid et al. (STAR Collaboration) Phys. Rev. C 109, 044914 (2024)

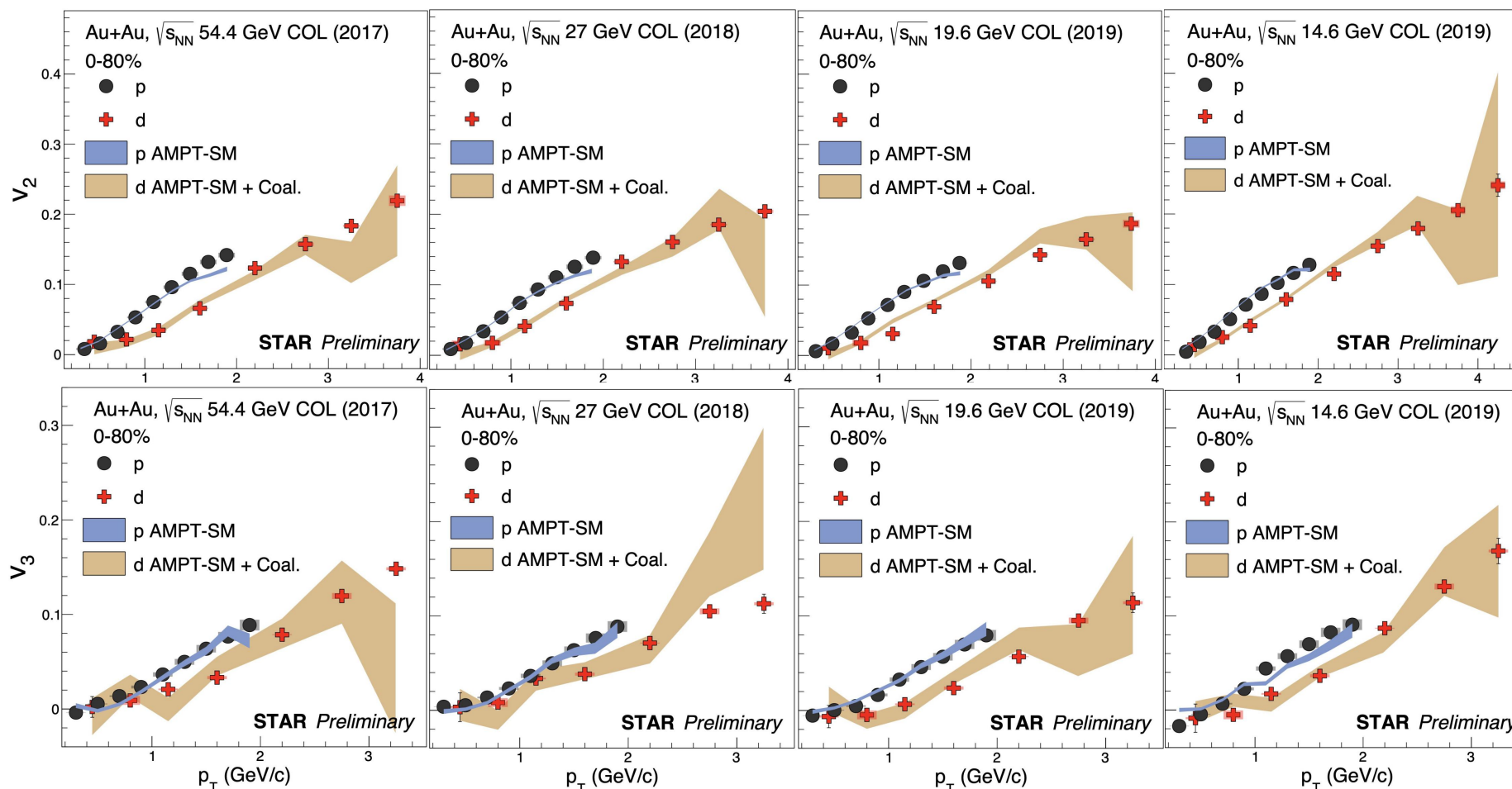


- The mid-rapidity v_1 slope of light and hyper-nuclei decreases with increasing collision energy.
- The slopes seems to scale with atomic mass number (A) at a given energy for both light and hyper-nuclei.
- Hadronic transport model (JAM2 mean field + Coalescence) is consistent with observed energy dependence, indicating coalescence as their production mechanism at high μ_B .

[1] M. S. Abdallah et al. (STAR Collaboration) Phys. Lett. B 827, 137003 (2022)

[2] B. E. Aboona et al., (STAR Collaboration), Phys. Rev. Lett. 130, 211301 (2023)

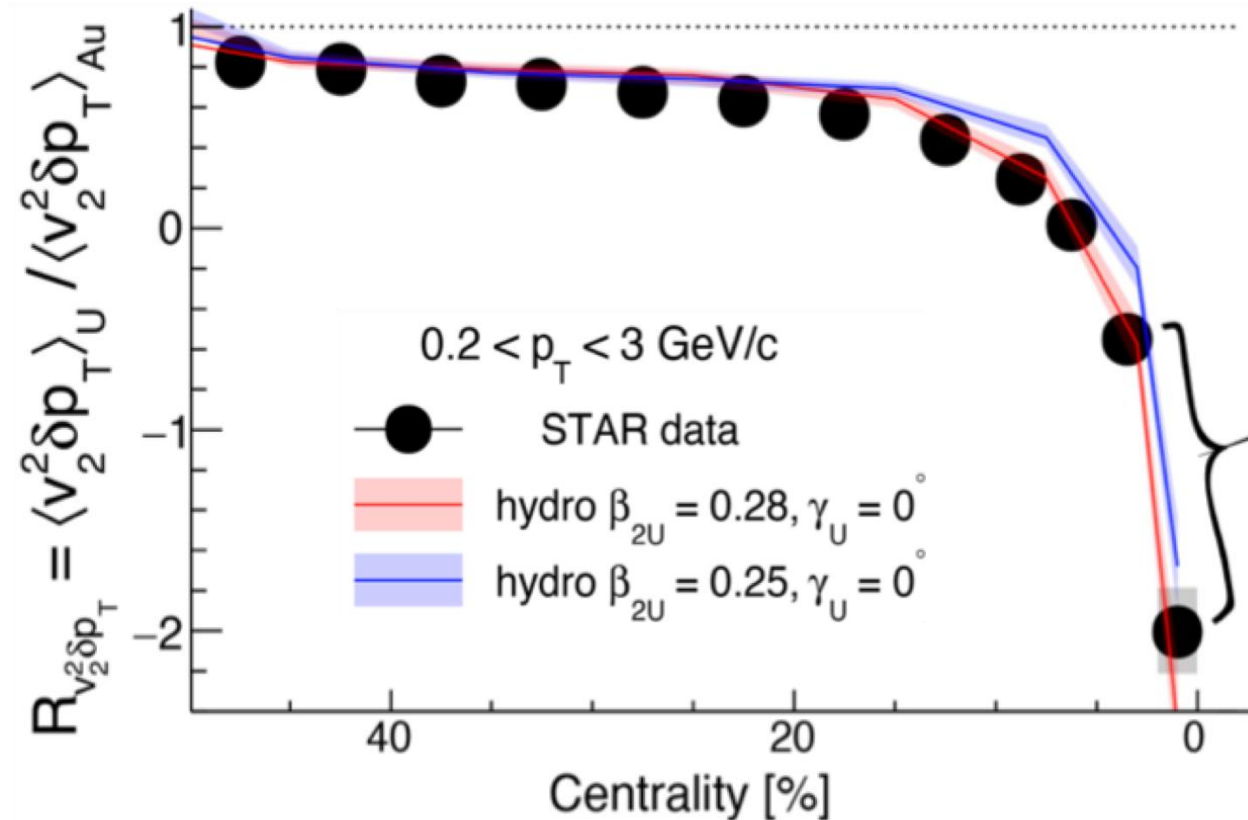
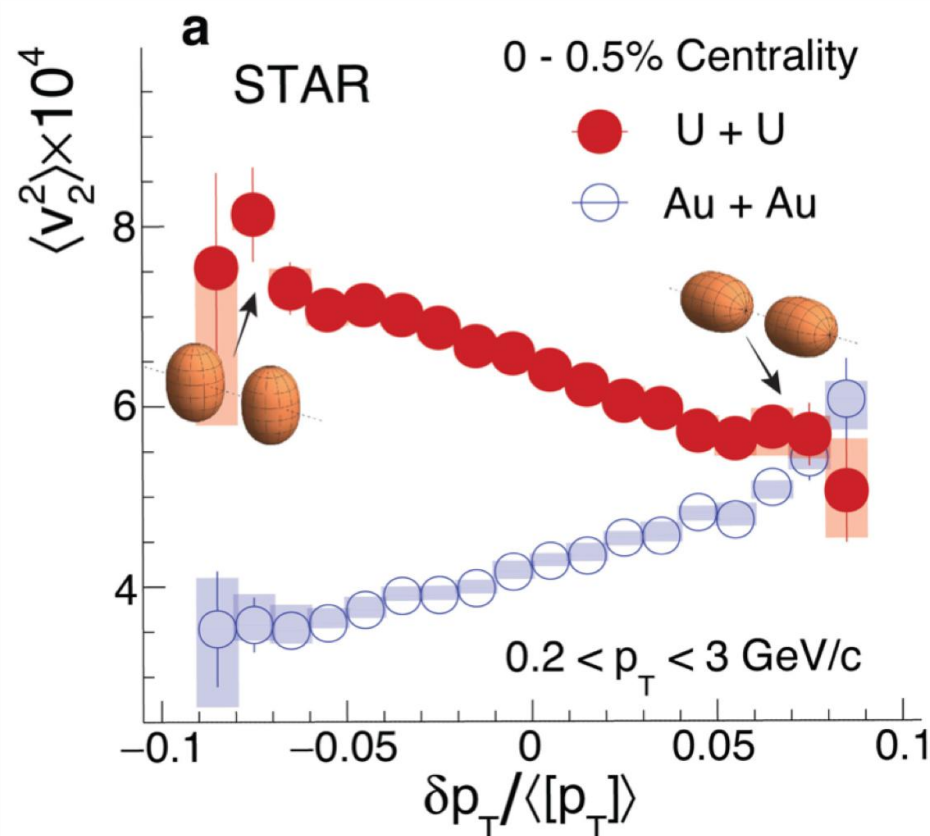
[3] Yasushi Nara, Akira Ohnishi. Phys. Rev. C 105, 014911 (2022)



- AMPT(SM) model with coalescence describes deuteron v_2 and v_3
 → Insights to light nuclei production mechanism in heavy-ion collisions

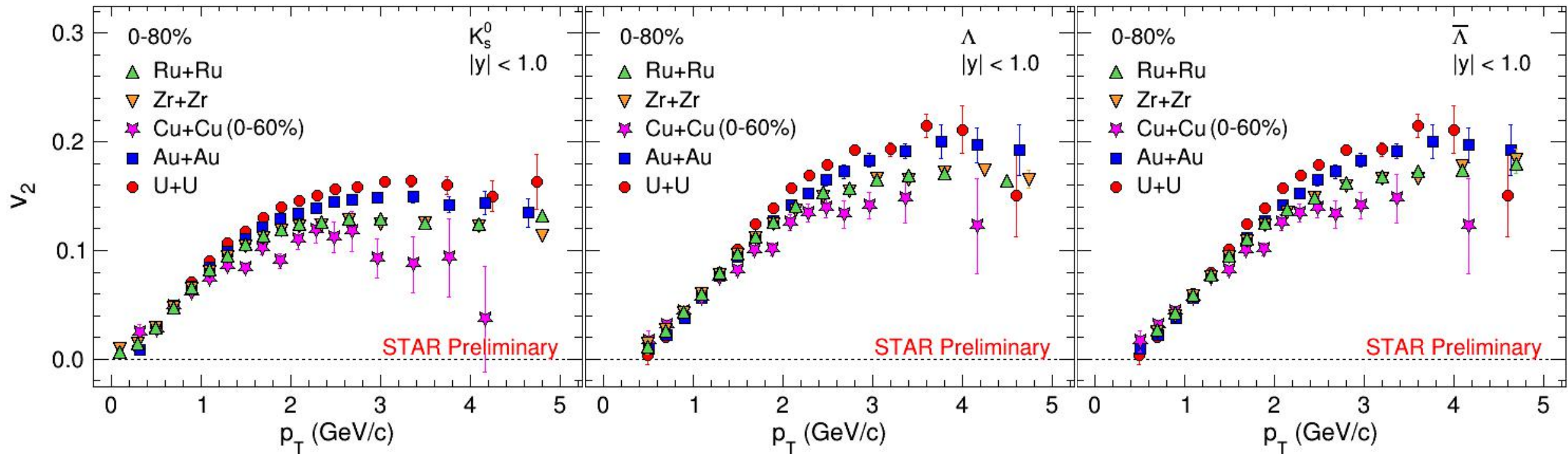
[1] L. Adamczyk et al. (STAR Collaboration) Phys. Rev. C 88, 014902 (2013)
 [3] M. S. Abdallah et al. (STAR Collaboration) Phys. Lett. B. 827 137003 (2022)

[2] M. S. Abdallah et al. (STAR Collaboration), Phys. Rev. C 103, 034908 (2021)
 [4] Z.-W. Lin et al., Phys. Rev. C 72, 064901 (2005)



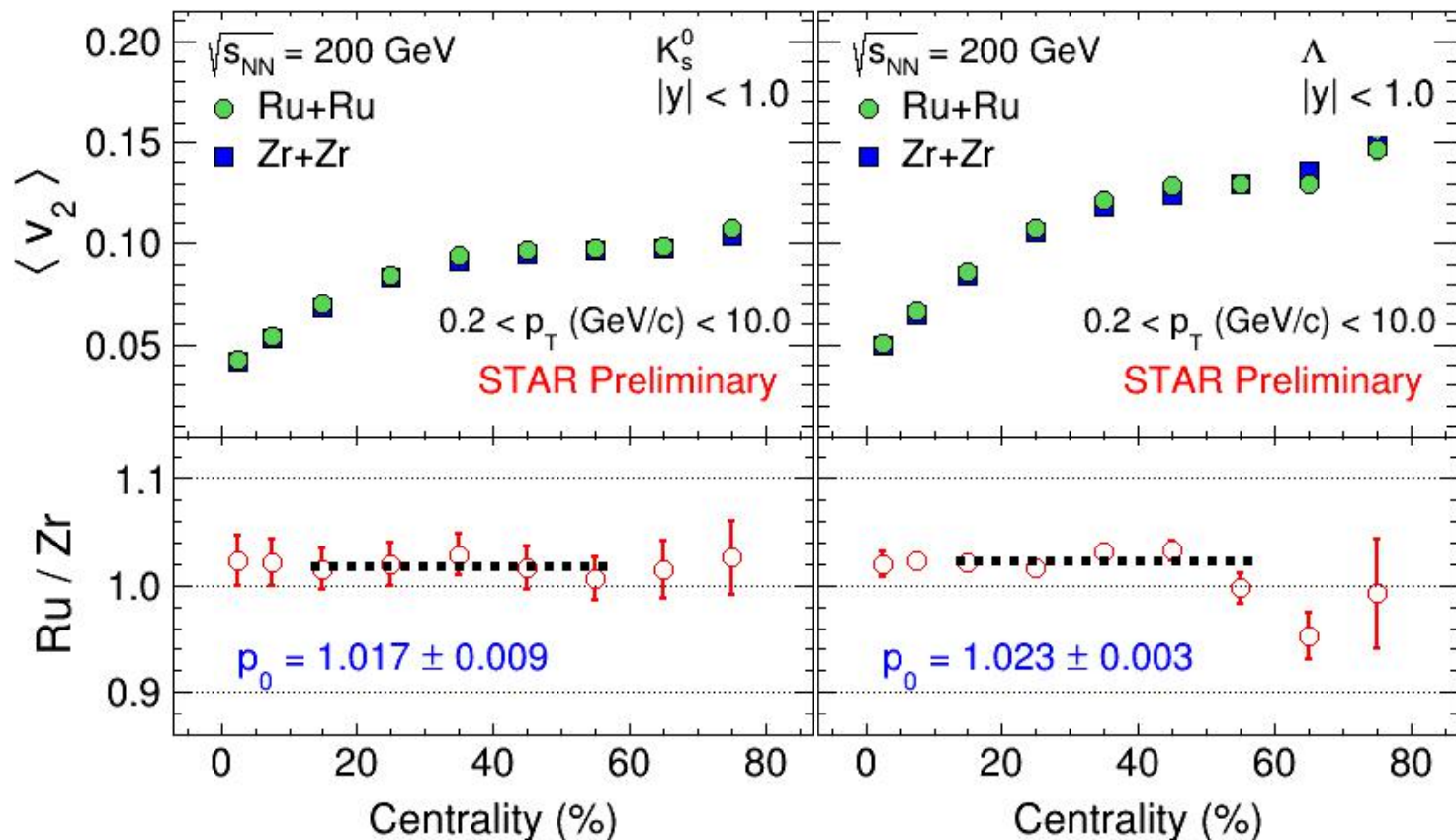
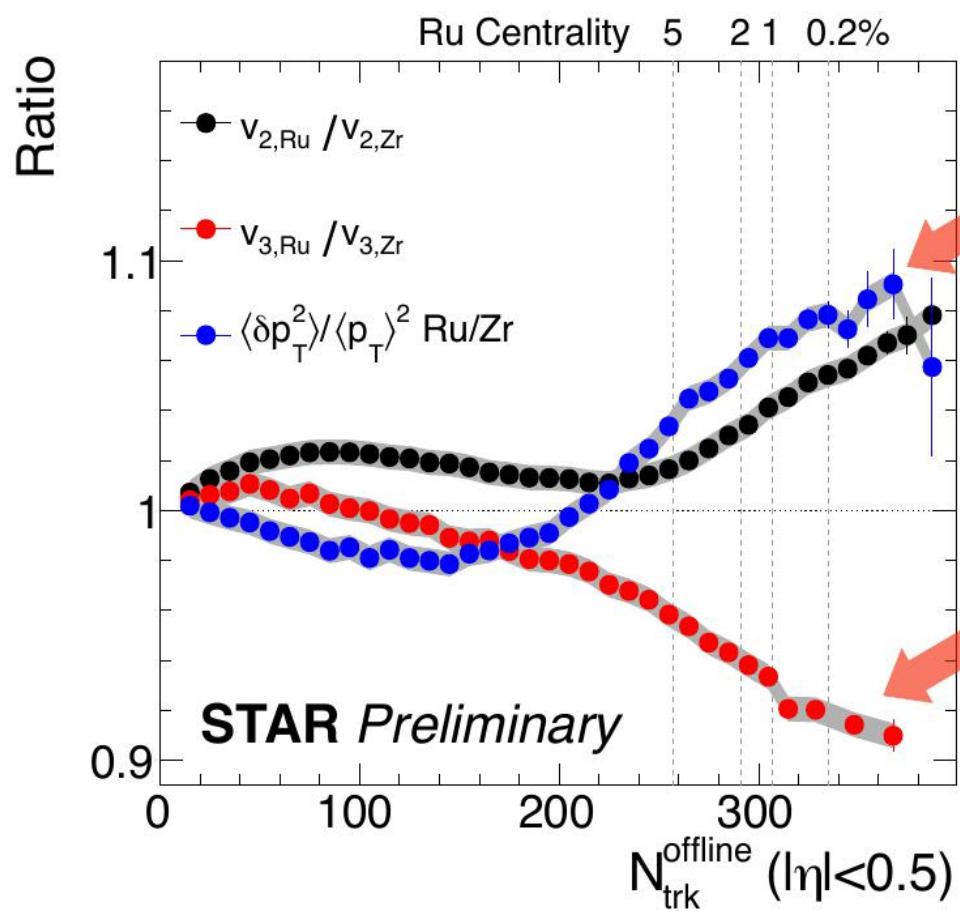
- Elliptic flow v_2 of charged hadrons enhanced in central U+U collisions compared to Au+Au collisions
- Average v_2 ratio and v_2 - p_T correlations can be used to constrain initial conditions and nuclear structure in U+U collisions

[1] STAR, arXiv:2401.06625 [nucl-ex] (2024)
[2] G. Giacalone et al., Phys. Rev. Lett. 127, 242301 (2021)
[3] B. Schenke et al., Phys. Rev. C 102, 034905 (2020)



- Elliptic flow at high p_T increases with atomic mass number of nuclei.
→ Indicating a nuclear size dependence

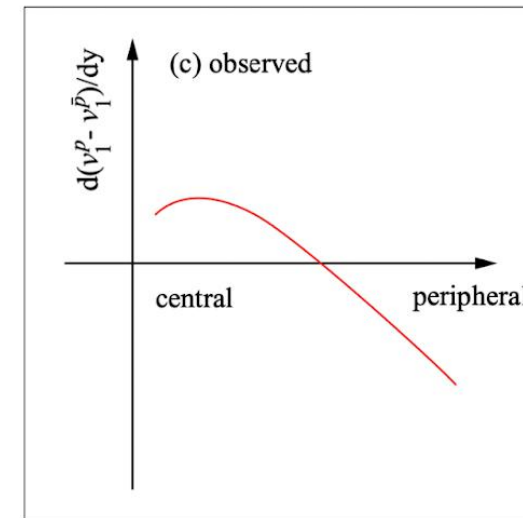
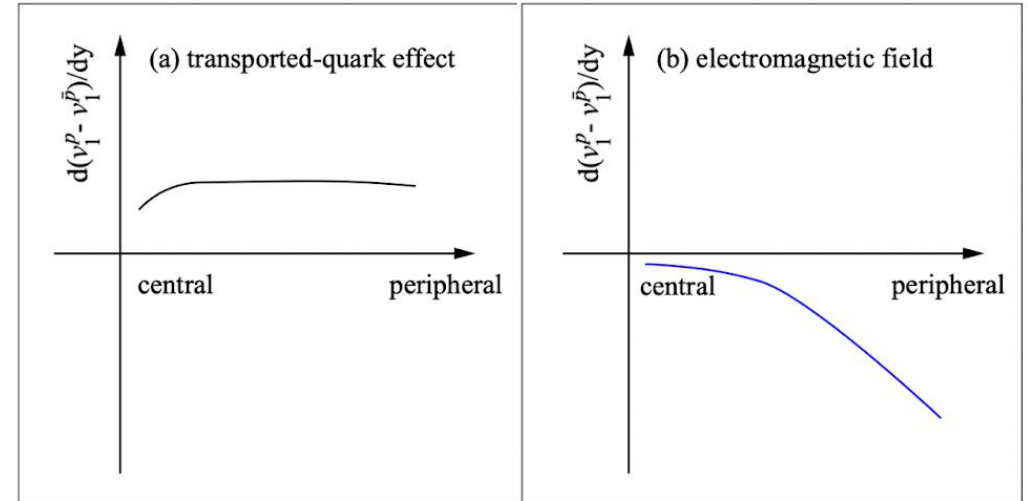
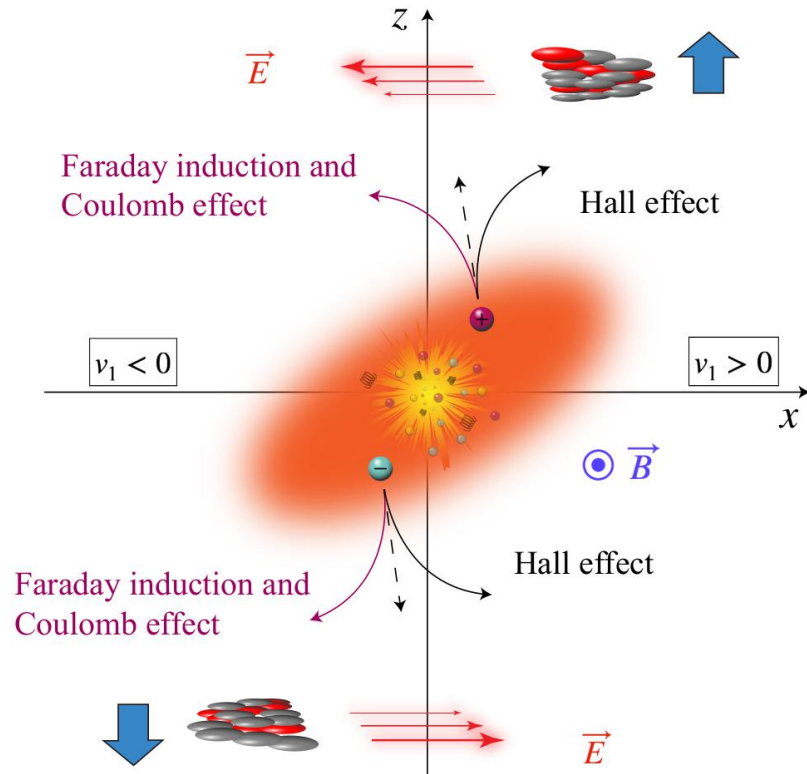
[1] B. I. Abelev et al. (STAR Collaboration) Phys. Rev. C 77, 054901 (2008)
 [2] B. I. Abelev et al. (STAR Collaboration), Phys. Rev. C 81, 044902 (2010)
 [3] M. S. Abdallah et al. (STAR Collaboration) Phys. Rev. C 103, 064907 (2021)



- Ratio of integrated v_2 between Ru+Ru and Zr+Zr collisions differs from unity
 → Indication of larger quadruple deformity in Ru nuclei than in the Zr nuclei

Quarks experience forces in the medium due to:

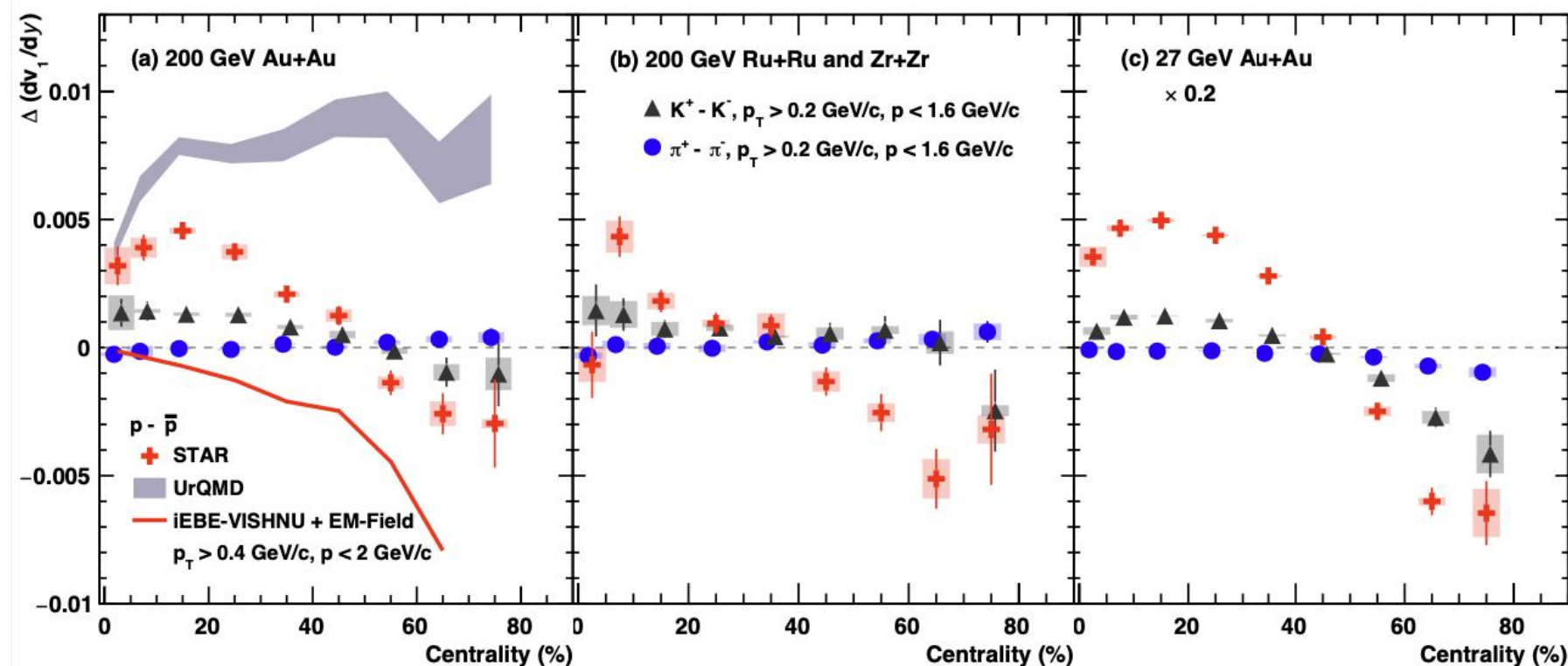
- **Hall Effect:** $\vec{F} = q(\vec{v} \times \vec{B})$
- **Coulomb Effect** (\vec{E} generated by spectators) and
- **Faraday Induction** (\vec{E} generated by decreasing magnetic field)



- Theory predict positive $\Delta dv_1/dy$ from transported quarks and negative $\Delta dv_1/dy$ from electromagnetic fields in QGP

[1] U. Gürsoy et al. Phys. Rev. C 98, 055201 (2018); Phys. Rev. C 89, 054905 (2014)

[2] M. I. Abdulhamid et al. (STAR Collaboration) Phys. Rev. X 14, 011028 (2024)



- Negative $\Delta(dv_1/dy)$ in peripheral collisions consistent with expectation from electromagnetic field effects
→ Dominance of Faraday effect in peripheral collisions
- Positive $\Delta(dv_1/dy)$ for protons in (mid)central collisions shows transported quark effect

M. I. Abdulhamid et al. (STAR Collaboration) Phys. Rev. X 14, 011028 (2024)

Collectivity in high μ_B region

- Anti-flow of mesons at low p_T suggest shadowing effect from spectators
- Absence of NCQ scaling at $\sqrt{s_{NN}} = 3$ and 3.2 GeV indicate baryonic interactions dominating nuclear EoS
- NCQ scaling gradually improves from 3.2 to 4.5 GeV, indicating dominance of partonic interactions for $\sqrt{s_{NN}} \geq 4.5$ GeV

Light nuclei collectivity

- Hadronic transport model (JAM + Coalescence) indicates coalescence to be the dominant mechanism of light and hyper nuclei production in heavy-ion collisions

System size dependence

- Elliptic flow at high p_T increases with atomic mass number of nuclei indicating nuclear size dependence.
- Ratio of $\langle v_2 \rangle$ and v_2 - p_T correlation between different collision system provide access to nuclei deformation

Electromagnetic field effects in HIC

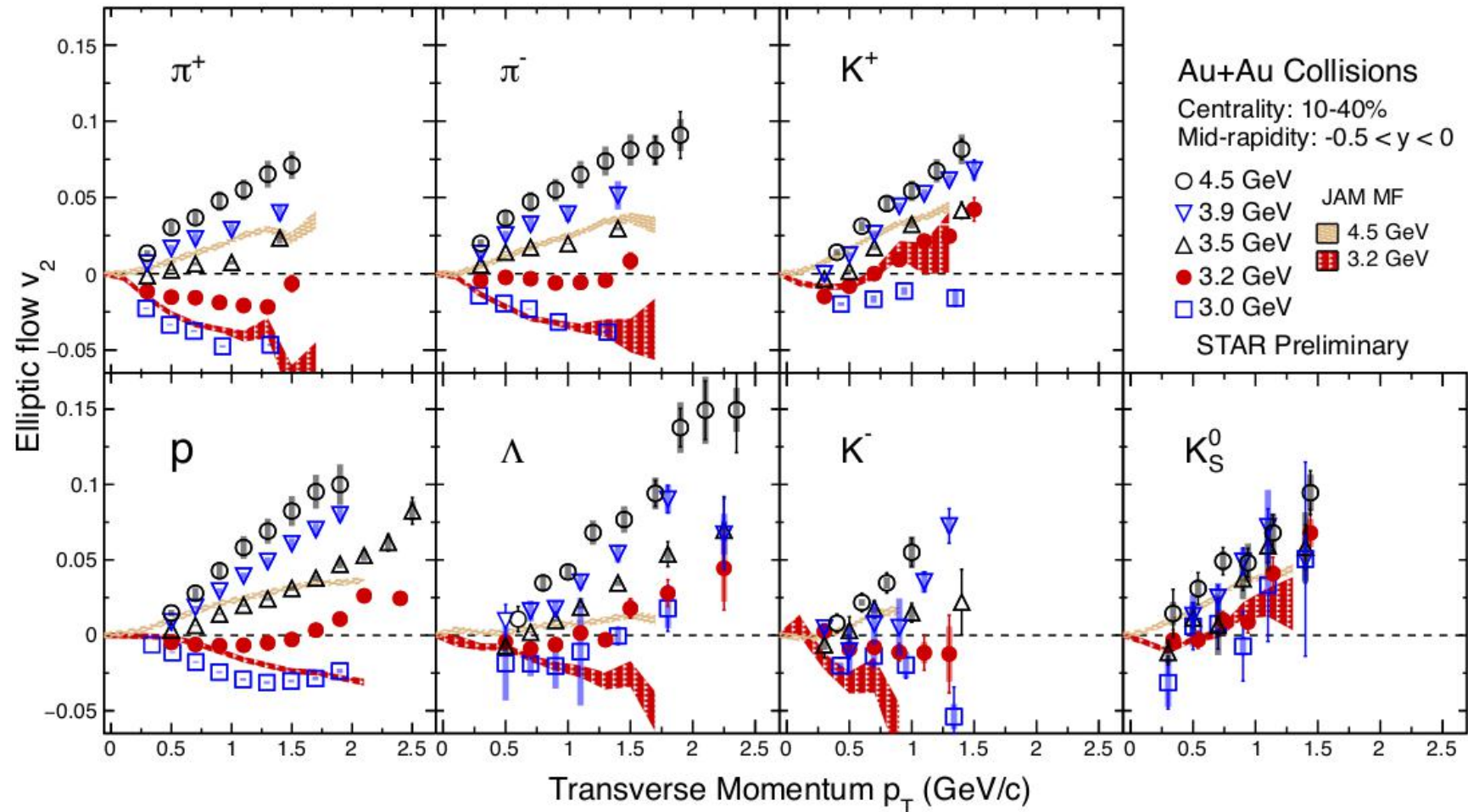
- Charge dependent v_1 results indicate dominance of Faraday effect in peripheral collisions

More exciting results to come from the high statistics data of BES and FXT program at STAR.
Collectivity from small to large systems and measurements in wider rapidity ranges using forward detectors enable us to explore the QGP properties, phase transition and more....

Thank you for your attention!

Backup

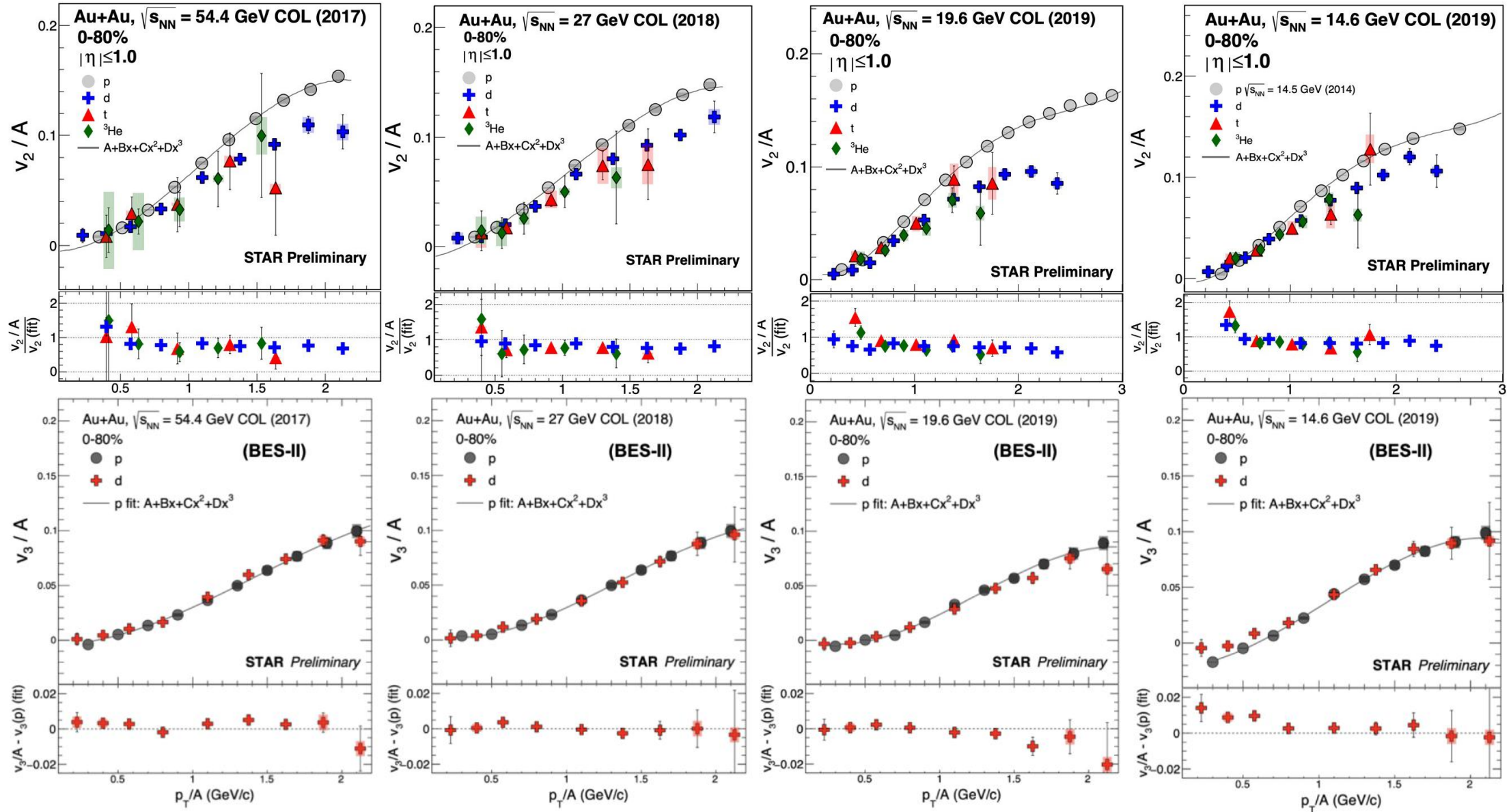
FXT



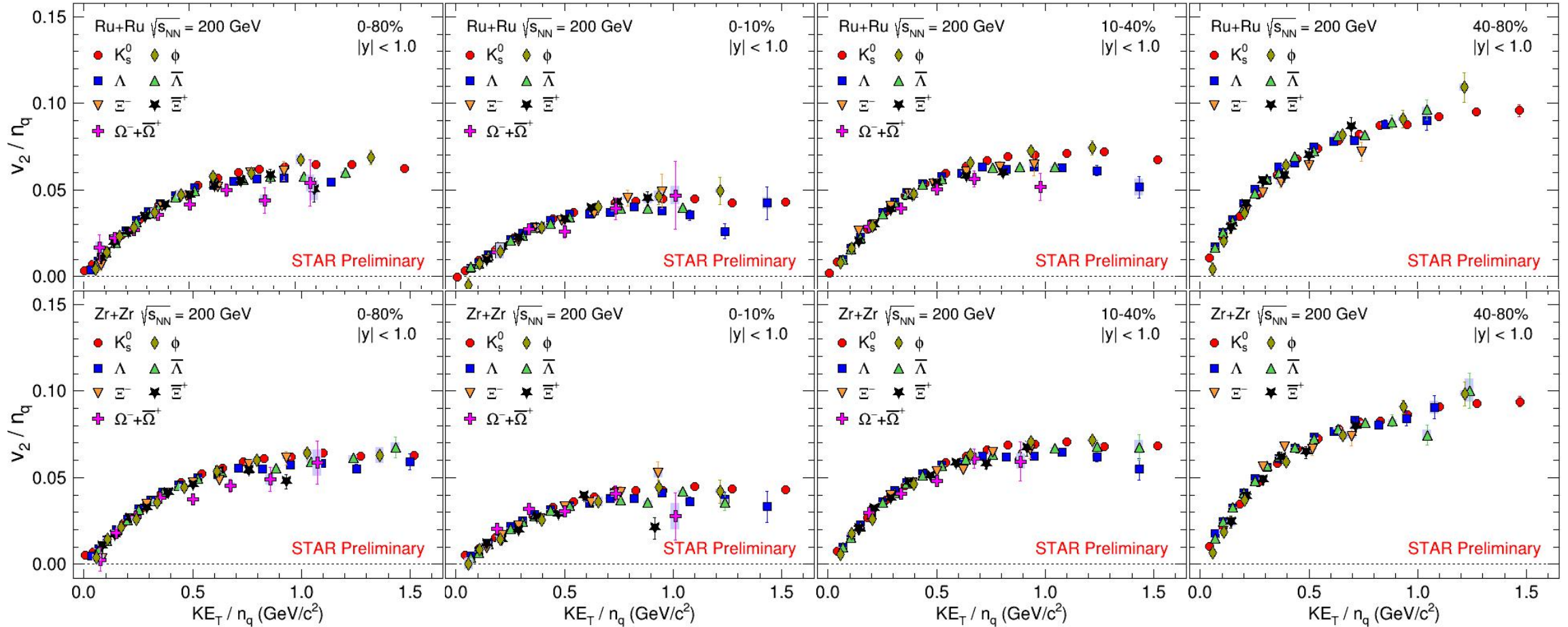
JET AA Microscopic Transport Model

- Momentum dependent mean-field potential
- Incompressibility constant $\kappa = 210$ MeV

- Energy dependence of $v_2(p_T)$: transition from negative to positive values indicate shadowing effect.
- JAM model with baryonic mean field describe 3.2 GeV data well while underestimating 4.5 GeV data, suggest baryonic dominated medium.



■ Light nuclei v_2 and v_3 obey mass number scaling at $\sim 30\%$ level in BES energies



$n_q = \text{Number of constituent quarks (3 for baryons and 2 for mesons)}; \text{ Transverse kinetic energy } (KE_T) = m_T - m_0$

- NCQ scaling hold good to $\pm 10\%$ within uncertainties in both Ru+Ru and Zr+Zr collisions at $\sqrt{s_{NN}} = 200$ GeV.
- Elliptic flow (v_2) scaled by number of constituent quarks falling on a universal curve, indicating partonic collectivity.