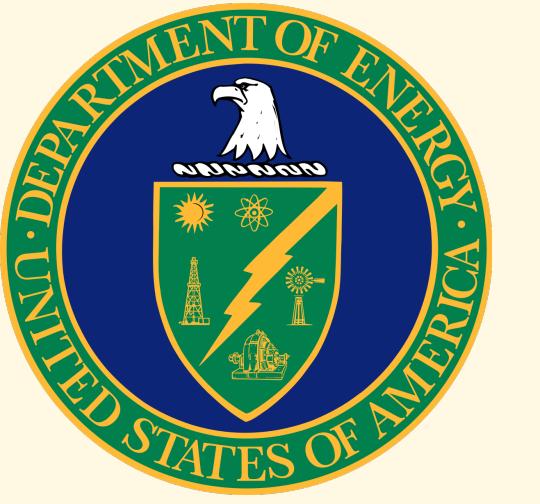


# Status of the Analyses for the Proton Higher-Order Fluctuations in the STAR Fixed-Target Program from $\sqrt{s_{NN}} = 3.2$ to 7.7 GeV

Partially funded by



Zachary Sweger (for the STAR Collaboration)  
University of California, Davis



## 1. Introduction

### Critical Fluctuations

- Fluctuations of conserved charges (such as baryon number) expected near critical point
- Proton number is a proxy for baryon number
- Cumulants of net-proton number distributions vs. collision energy are measured
- QCD calculations predict non-monotonic cumulants vs  $\sqrt{s_{NN}}$  if close to critical point [1]

### Cumulants and Moments

Cumulants of a distribution are defined as [2]:

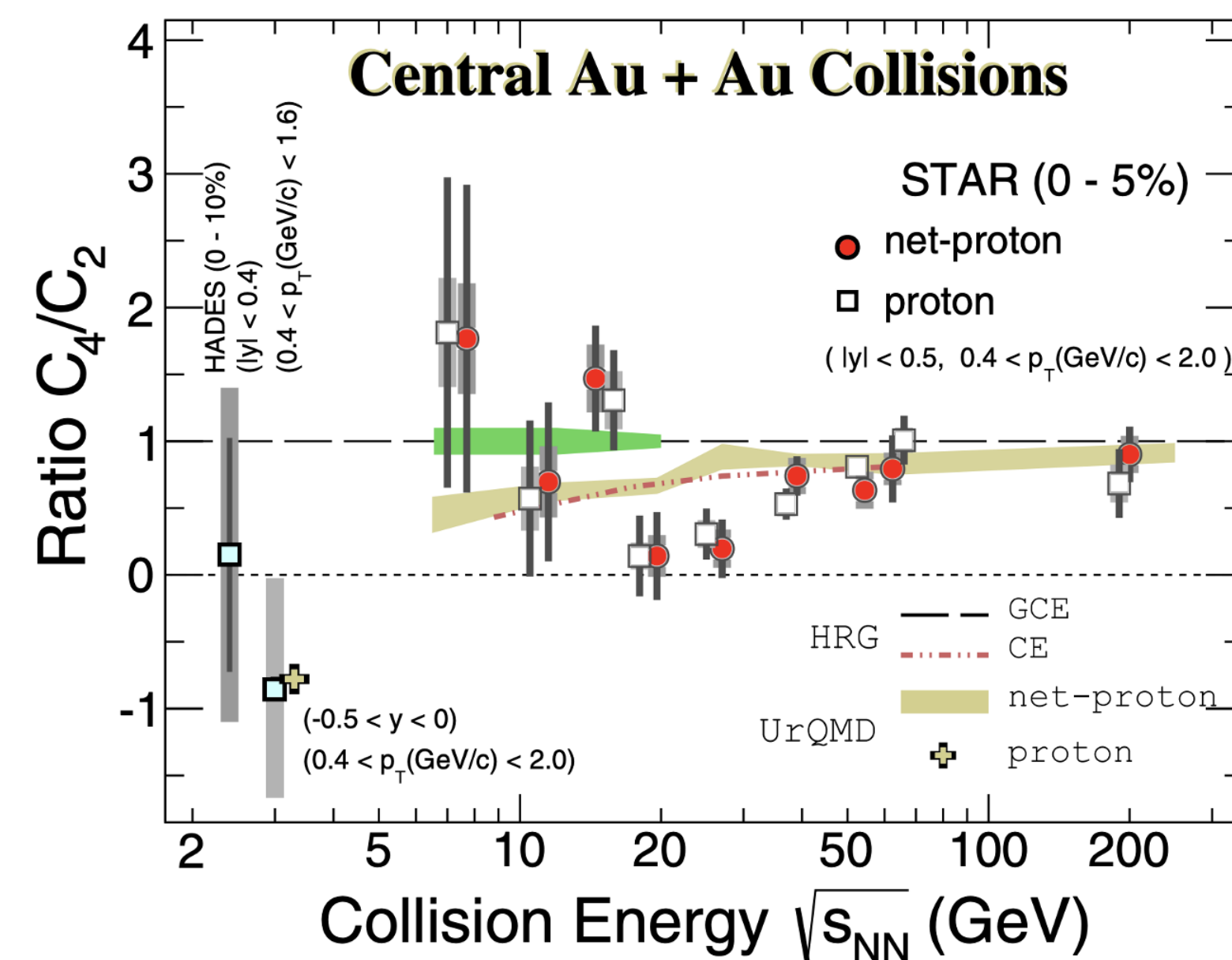
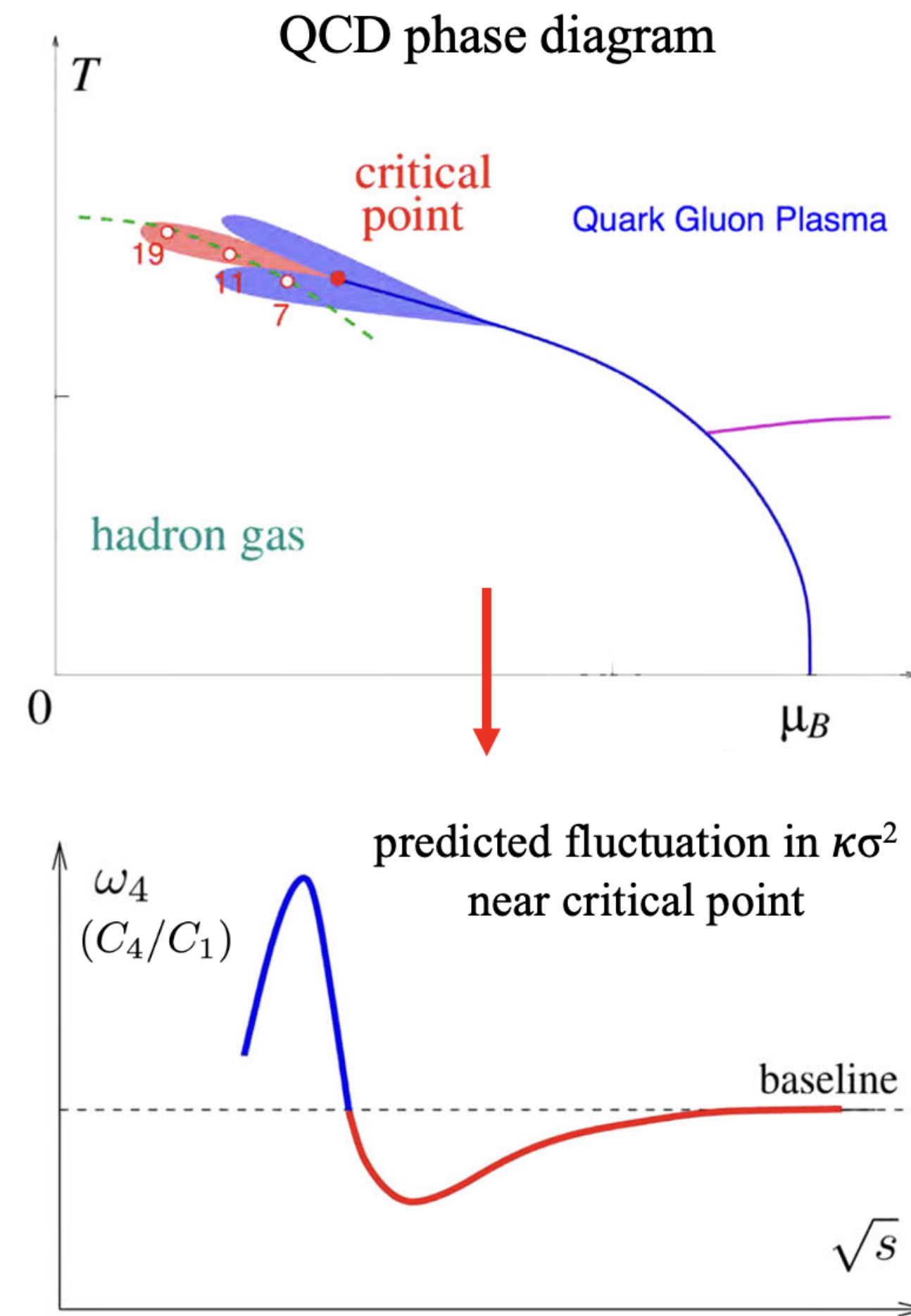
- $C_1 = \langle N \rangle \equiv \mu$
- $C_2 = \langle (N - \mu)^2 \rangle \equiv \sigma^2$
- $C_3 = \langle (N - \mu)^3 \rangle$
- $C_4 = \langle (N - \mu)^4 \rangle - 3\langle (N - \mu)^2 \rangle^2$

Some standardized moments are:

- $S\sigma = C_3/C_2$  [measures asymmetry]
- $\kappa\sigma^2 = C_4/C_2$  [measures "tailedness"]

### Previous Results

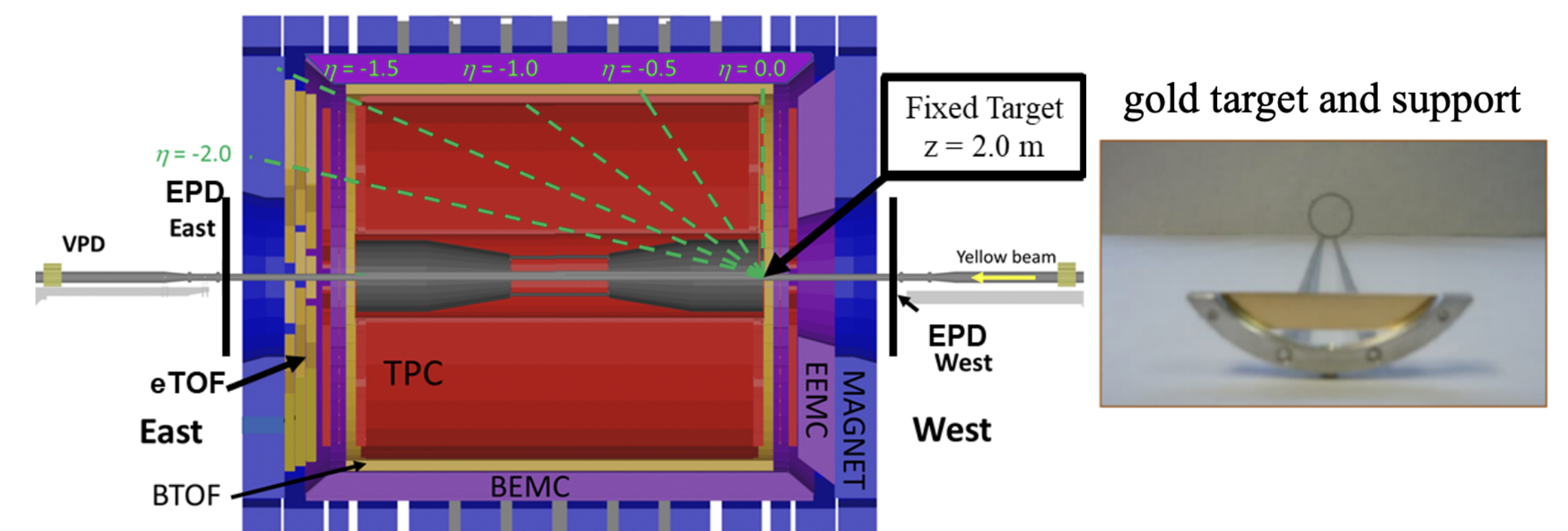
- Non-monotonicity in Beam Energy Scan I net-proton  $C_4/C_2$  with  $3.1\sigma$  significance
- Recent  $\sqrt{s_{NN}} = 3$  GeV measurement returns to non-critical baseline [3]
- High-statistics collider data from Beam Energy Scan II will improve measurements from  $\sqrt{s_{NN}} = 7.7-27$  GeV
- Fixed-target data will fill the gap between  $\sqrt{s_{NN}} = 3$  and 7.7 GeV



## 2. The STAR Fixed-Target Program

- Relativistic Heavy-Ion Collider (RHIC) luminosity in collider mode is unusable for Au+Au below  $\sqrt{s_{NN}} = 7.7$  GeV
- Gold target installed on west end of STAR TPC
- New data from  $\sqrt{s_{NN}} = 3.0 - 7.7$  GeV

$\sqrt{s_{NN}}$ (GeV)	3.2	3.5	3.9	4.5	5.2	6.2	7.2	7.7
$\mu_B$ (GeV)	0.70	0.67	0.63	0.59	0.54	0.49	0.44	0.42
$y_{CM}$	1.139	1.254	1.375	1.522	1.683	1.867	2.021	2.102
# good evts produced	201M	116M	117M	108M	103M	118M	317M	113M
	yes	yes	yes	yes	yes	yes	no	yes

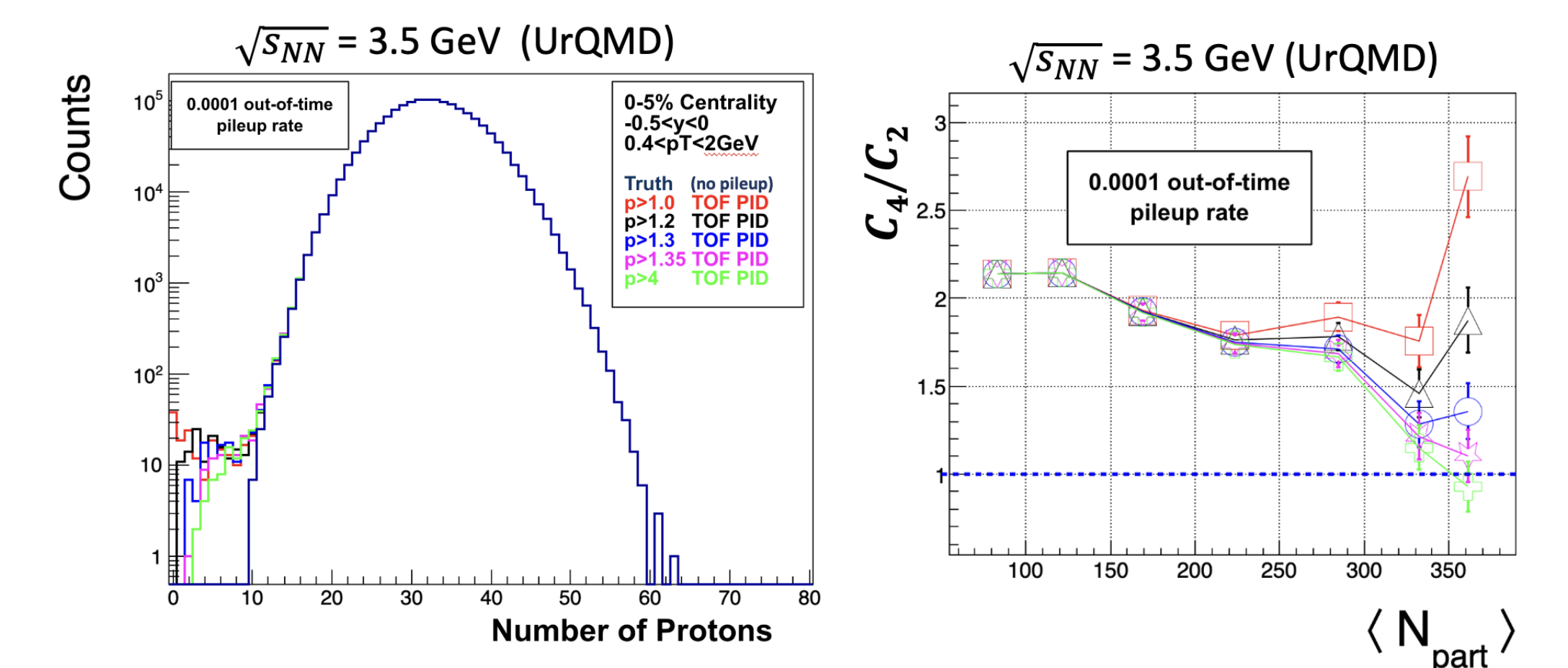


### Challenges

- Acceptance is asymmetric w.r.t. midrapidity
- Limited midrapidity acceptance at higher energies
- Time-of-flight (TOF) required for particle identification

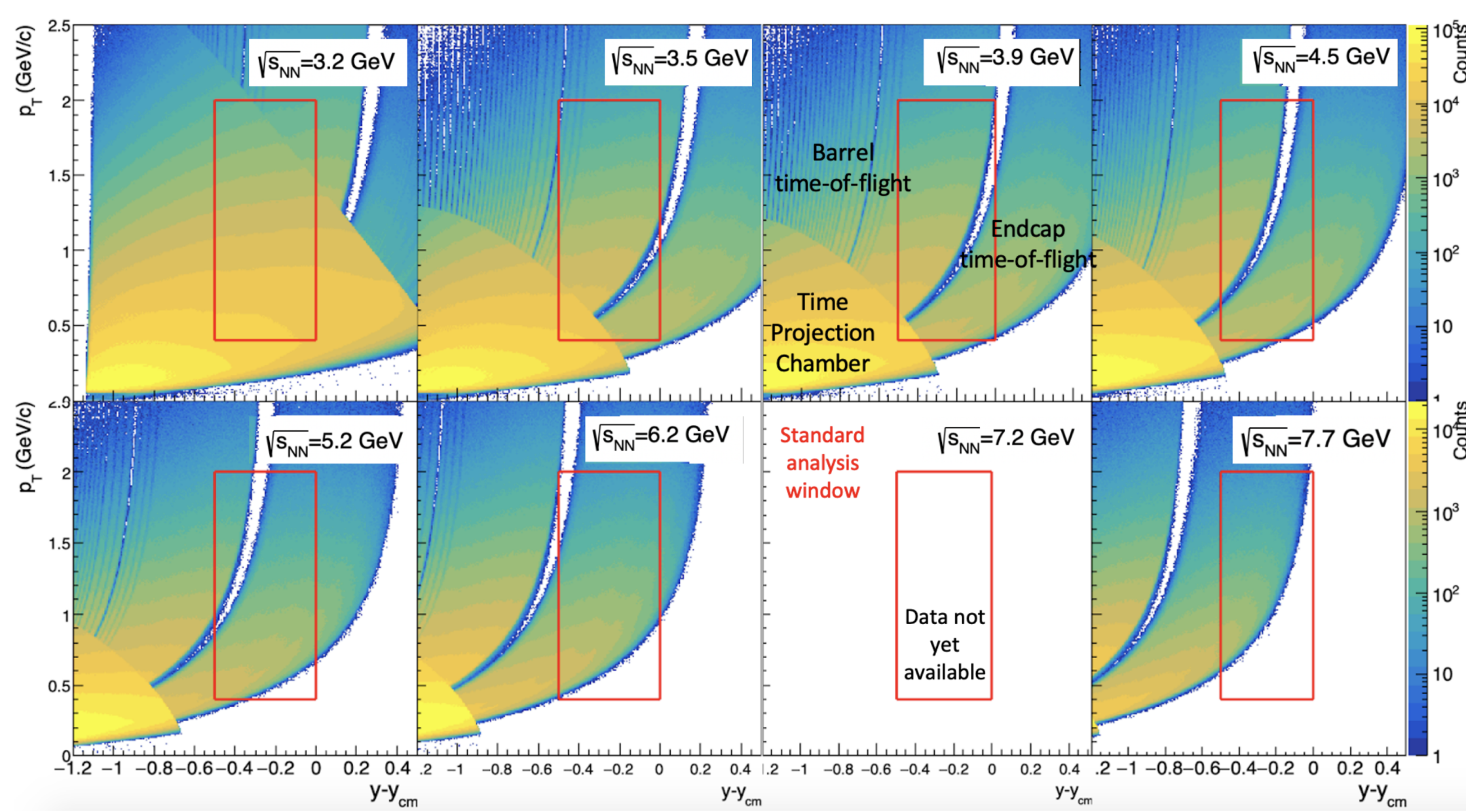
## 4. Timing Fluctuations

- Fixed-target analysis uses TOF and TPC for proton ID
- Centrality determined by TPC multiplicity
- TOF relies on precision timing and often misses protons from pileup with timing offset
- TPC multiplicity includes pileup tracks
- Pileup events classified as central collisions but have few TOF-identified protons
- This causes tail on proton-number distribution, which creates false signal for high-order cumulants



**Solution:** Reject pileup, do not correct for it. Usual cumulant correction for pileup doesn't fix timing fluctuations

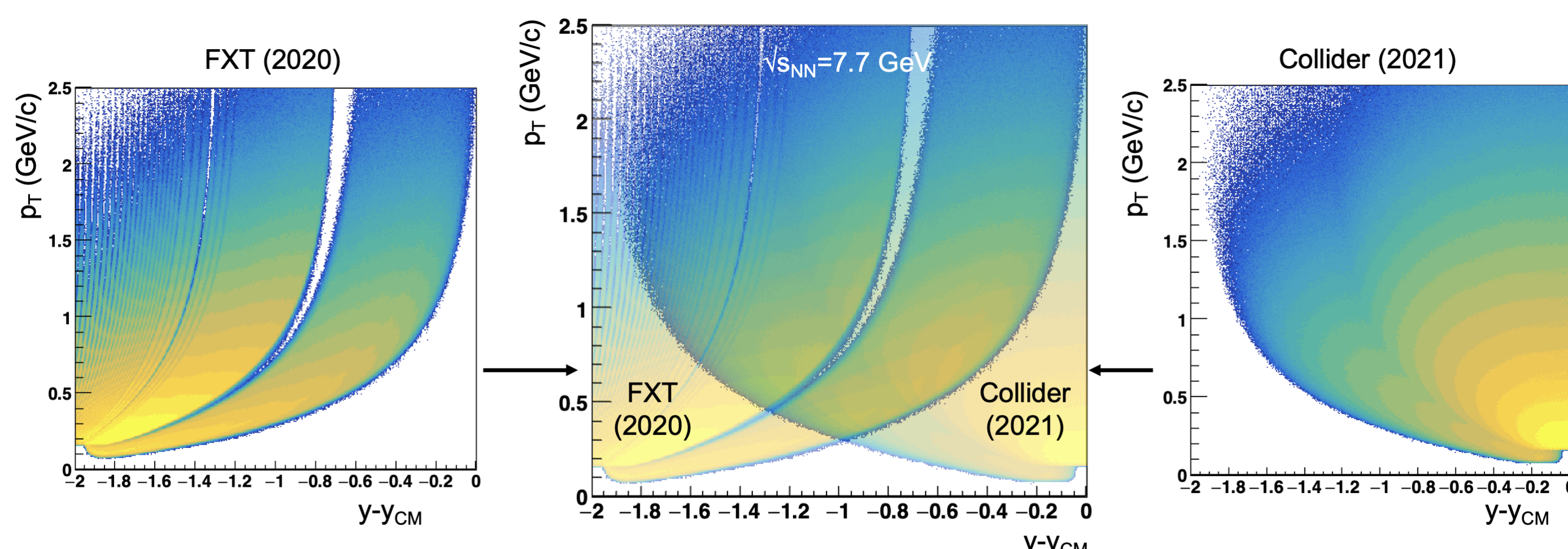
## 3. Acceptance



- Standard analysis window ( $0.4 < p_T < 2$  GeV,  $-0.5 < y - y_{cm} < 0$ ) shown by red box
- We have near full acceptance up to  $\sqrt{s_{NN}} = 4.5$  GeV
- Top energy analyses must be away from midrapidity

### Overlap at $\sqrt{s_{NN}} = 7.7$ GeV

- Data was taken at  $\sqrt{s_{NN}} = 7.7$  GeV in both the collider and fixed-target configurations
- There is significant overlap in acceptance for a comparison
- Overlap analysis will increase confidence in fixed-target and collider methodologies



## References

- M. A. Stephanov, J. Phys. G: Nucl. Part. Phys. **38** 124147 (2011).
- X. Luo and N. Xu, Nucl. Sci. Tech. **28**, 112 (2017).
- M. Abdallah *et al.*, (STAR Collaboration) Phys. Rev. Lett. **128**, 202303 (2022).

## 5. Outlook

- Fixed-Target Program extends energy range of RHIC down to  $\sqrt{s_{NN}} = 3$  GeV
- Fixed-target proton fluctuations analyses are underway from  $\sqrt{s_{NN}} = 3.2-7.7$  GeV
- Overlap acceptance for fixed-target and collider data at  $\sqrt{s_{NN}} = 7.7$  GeV allows methodology cross-check
- Reliance on TOF for particle ID makes measurements sensitive to timing fluctuations, which can be managed
- Prior measurements show non-monotonic variation in  $C_4/C_2$  as a function of  $\sqrt{s_{NN}}$  at  $3.1\sigma$  significance
- Fixed-target data will add mid-rapidity  $C_4/C_2$  measurements at  $\sqrt{s_{NN}} = 3.2-4.5$  GeV to energy scan